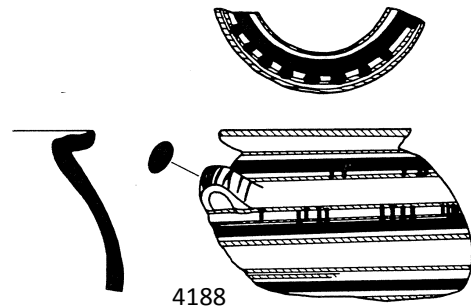


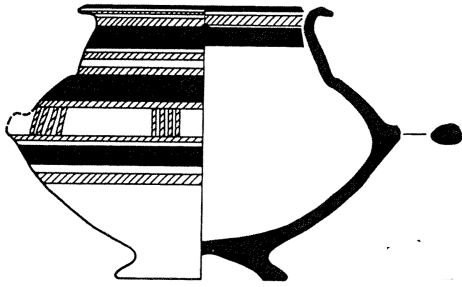
4186



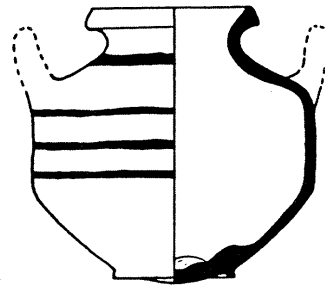
4187



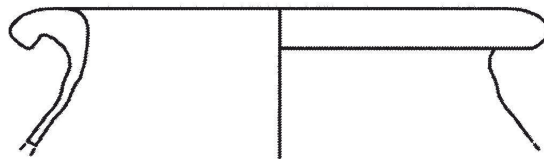
4188



4189



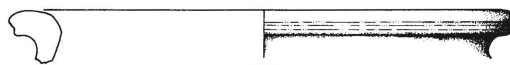
4190



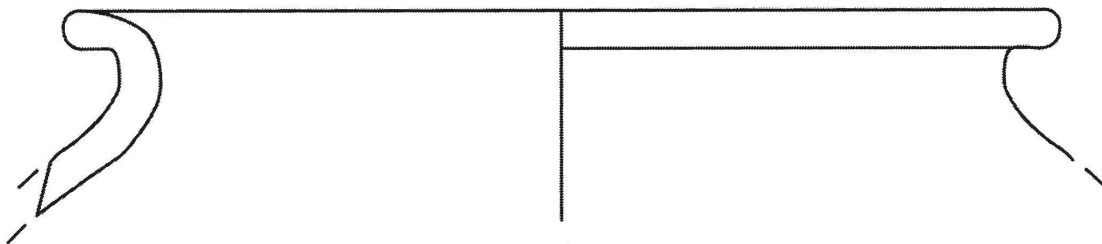
4191



4192



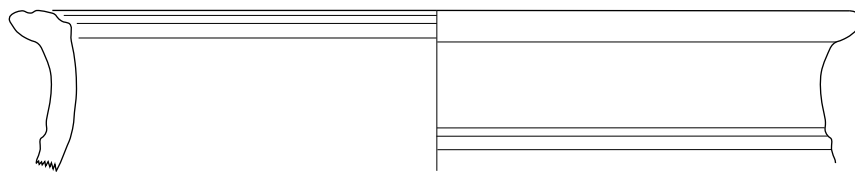
4193



4194

4186: Maßstab unbekannt, 4187-4194: Maßstab 1:3.

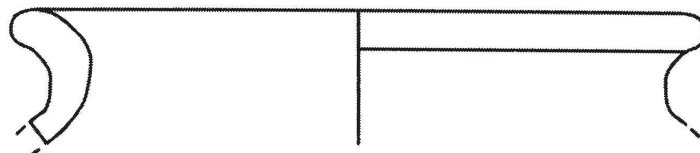
4186: Courtois 1978: 359 fig. 57.8, 4187: Loud 1948: pl. 77.10, mit freundlicher Genehmigung Oriental Institute of the University of Chicago, 4188: MacGovern - Brown 1986: 97 fig. 22.36, mit freundlicher Genehmigung Penn Museum, 4189: MacGovern - Brown 1986: 137 fig. 42.9, mit freundlicher Genehmigung Penn Museum, 4190: Pritchard 1980: 49 fig. 12.1, 4191: Iamoni 2012: pl. 16.9, 4192: Seeden 1986: 65 pl. 16.127, 4193: Seeden 1986: 79 pl. 23.320, 4194: Iamoni 2012: pl. 47.14.



4195



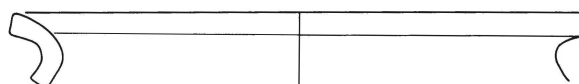
4196



4197



4198



4199



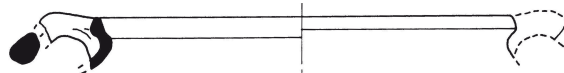
4200



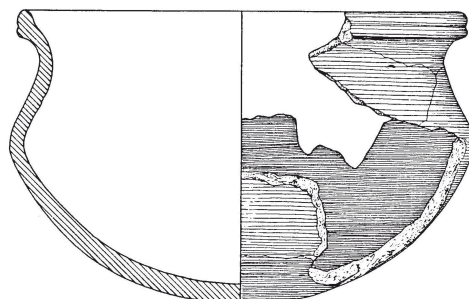
4201



4202



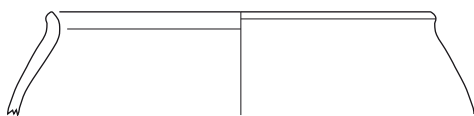
4203



4204

Maßstab 1:3.

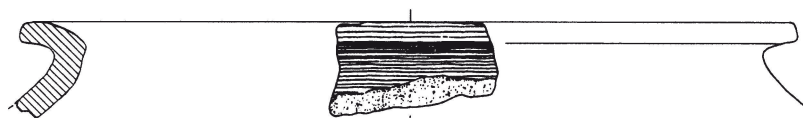
4195: MSH08G-q1091_204, Qatna-Projekt Universität Tübingen, 4196: Adler - Penner 2001: Taf. 92.6, Copyright Universität des Saarlandes, Fachrichtung Altertumskunde, Abt. Vor- und Frühgeschichte und Vorderasiatische Archäologie, 4197: Iamoni 2012: pl. 47.7, 4198: Monchambert 2004: 212 fig. 90.1247, 4199: Seeden 1986: 65 pl. 16.125, 4200: MSH01G-q0170_18, Qatna-Projekt Universität Tübingen, 4201: MSH06G-q0667_896, Qatna-Projekt Universität Tübingen, 4202: MSH00G-q0353_2, Qatna-Projekt Universität Tübingen, 4203: Doumet-Serhal 1996: 236 pl. 54.7, 4204: Miron 1990: Taf. 71.8, Copyright Universität des Saarlandes, Fachrichtung Altertumskunde, Abt. Vor- und Frühgeschichte und Vorderasiatische Archäologie.



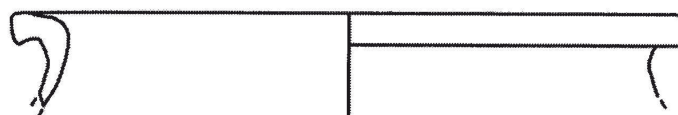
4205



4206



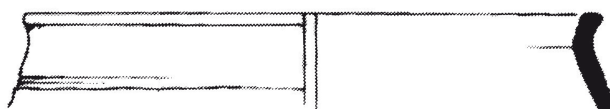
4207



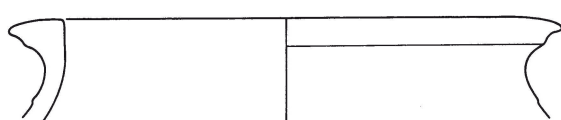
4208



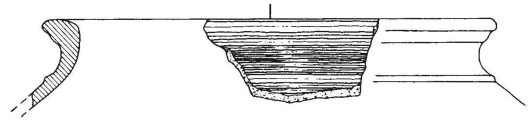
4209



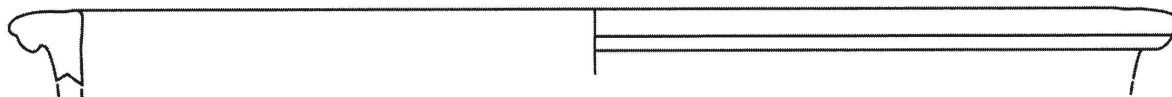
4210



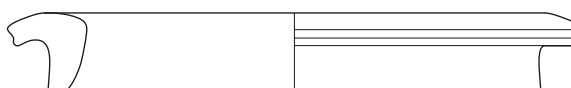
4211



4212



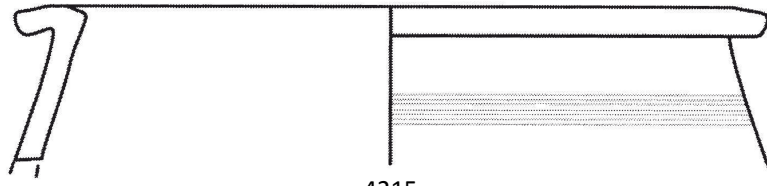
4213



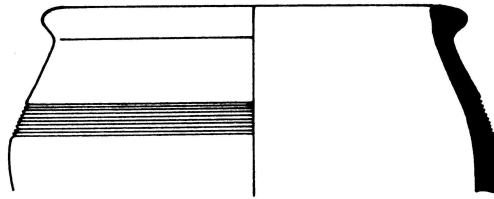
4214

4205-4212, 4214: Maßstab 1:3, 4213: Maßstab 1:4.

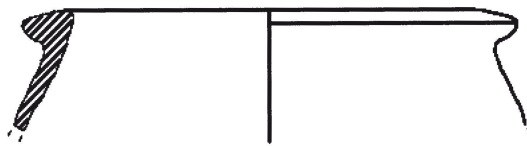
4205: MSH00G-q0353_4, Qatna-Projekt Universität Tübingen, 4206: Panitz-Cohen - Mazar 2006: 369 pl. 18.5, 4207: Penner 2006: Taf. 4.2, Copyright Universität des Saarlandes, Fachrichtung Altertumskunde, Abt. Vor- und Frühgeschichte und Vorderasiatische Archäologie, 4208: Iamoni 2012: pl. 18.8, 4209: Iamoni 2012: pl. 48.11, 4210: Ben-Dov 2002: 59 fig. 2.30.11, 4211: Seeden 1986: 67 pl. 17.142, 4212: Metzger 1993: Taf. 113.7, Copyright Universität des Saarlandes, Fachrichtung Altertumskunde, Abt. Vor- und Frühgeschichte und Vorderasiatische Archäologie, 4213: Iamoni 2012: pl. 26.4, 4214: MSH06G-q0667_975, Qatna-Projekt Universität Tübingen.



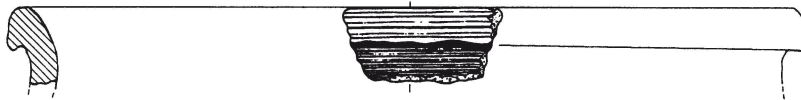
4215



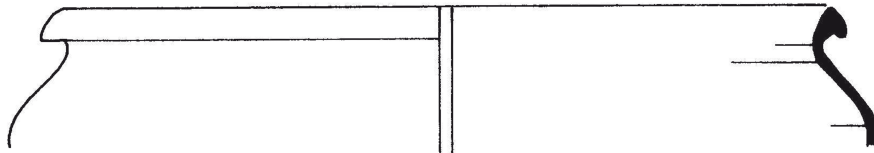
4216



4217



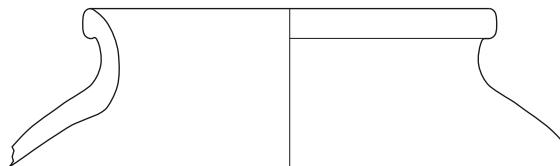
4218



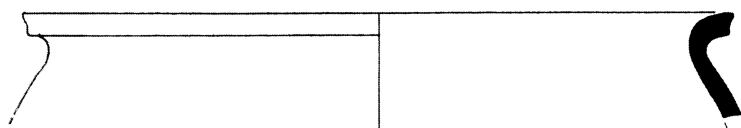
4219



4220

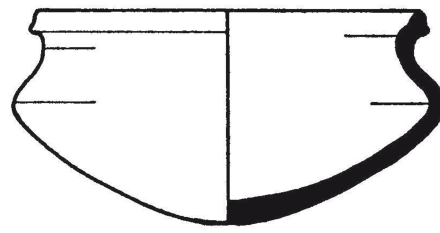


4221

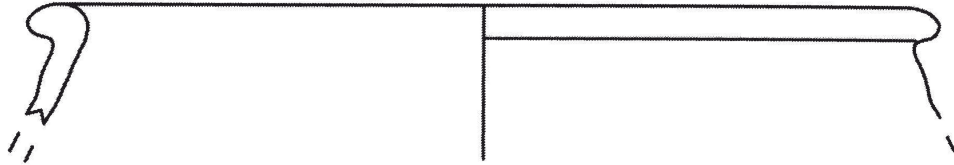


4222

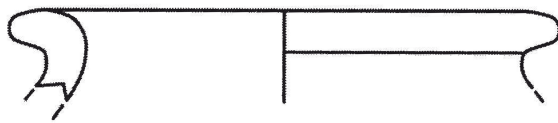
Maßstab 1:3.



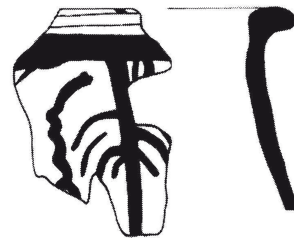
4223



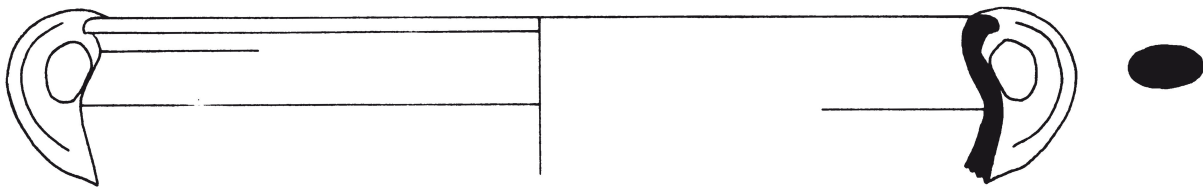
4224



4225



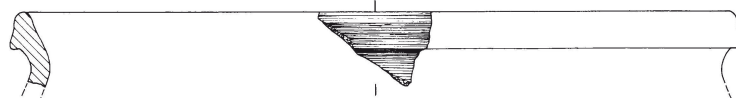
4226



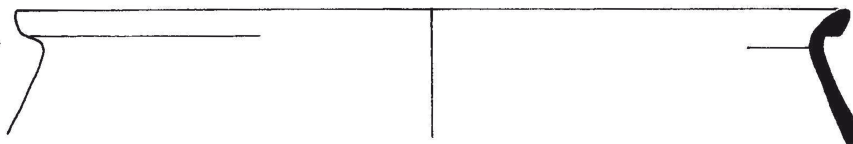
4227



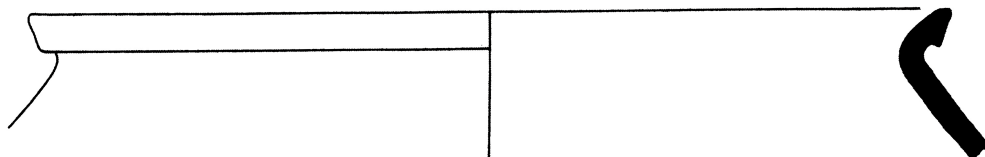
4228



4229



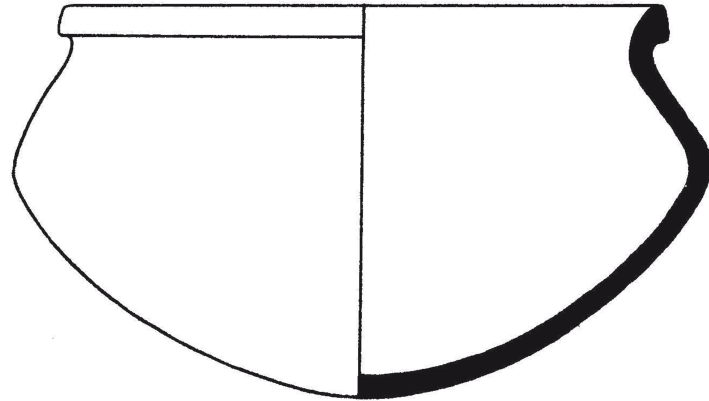
4230



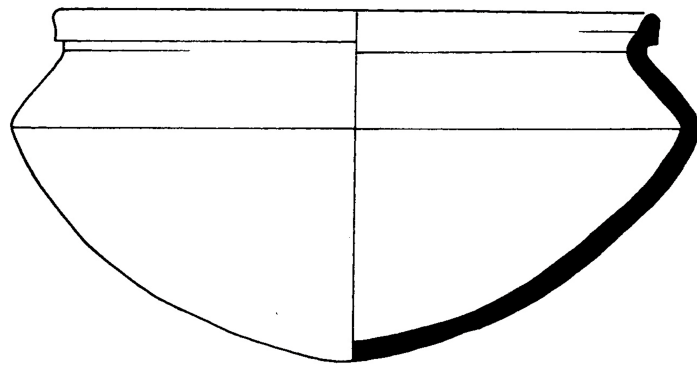
4231

Maßstab 1:3.

4223: Yadin et al. 1960: pl. CXXXVIII.1, mit freundlicher Genehmigung Israel Exploration Society, 4224: Iamoni 2012: pl. 45.9, 4225: Iamoni 2012: pl. 50.10, 4226: Killebrew 2010: 365 pl. 24.14, 4227: Dever 1974: pl. 25.24, 4228: Yadin et al. 1958: pl. LXXXV.23, mit freundlicher Genehmigung Israel Exploration Society, 4229: Adler - Penner 2001: Taf. 95.3, Copyright Universität des Saarlandes, Fachrichtung Altertumskunde, Abt. Vor- und Frühgeschichte und Vorderasiatische Archäologie, 4230: Yannai 2004: 1081 fig. 19.12.18, 4231: Fischer 2006: 174 fig. 205.4.



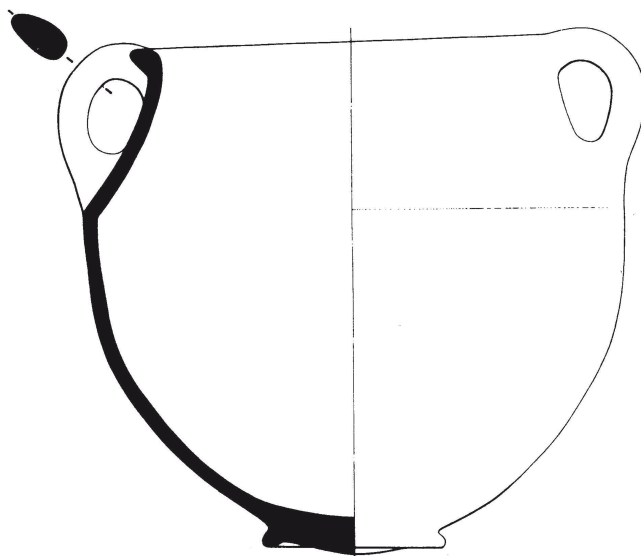
4232



4233

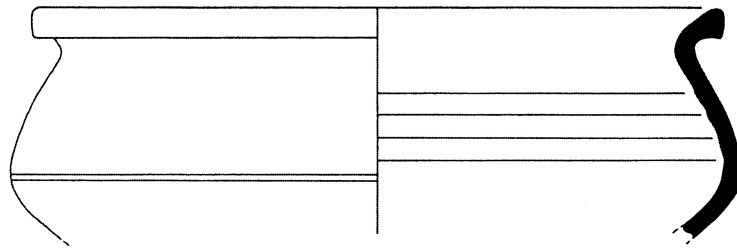


4234

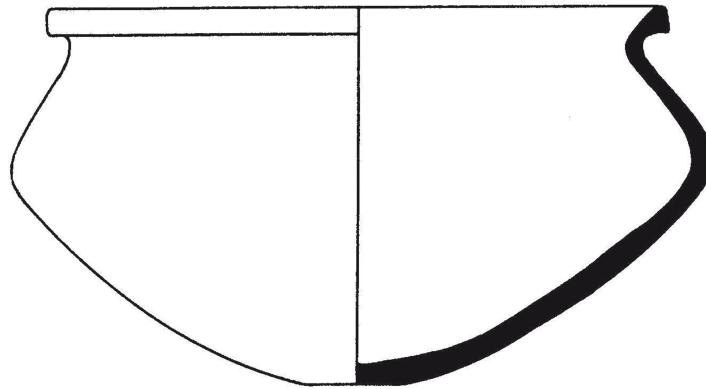


4235

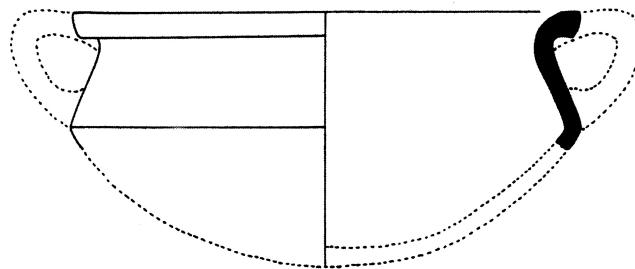
4232-4233: Maßstab 1:3, 4234: Maßstab 1:4, 4235: Maßstab 1:10.



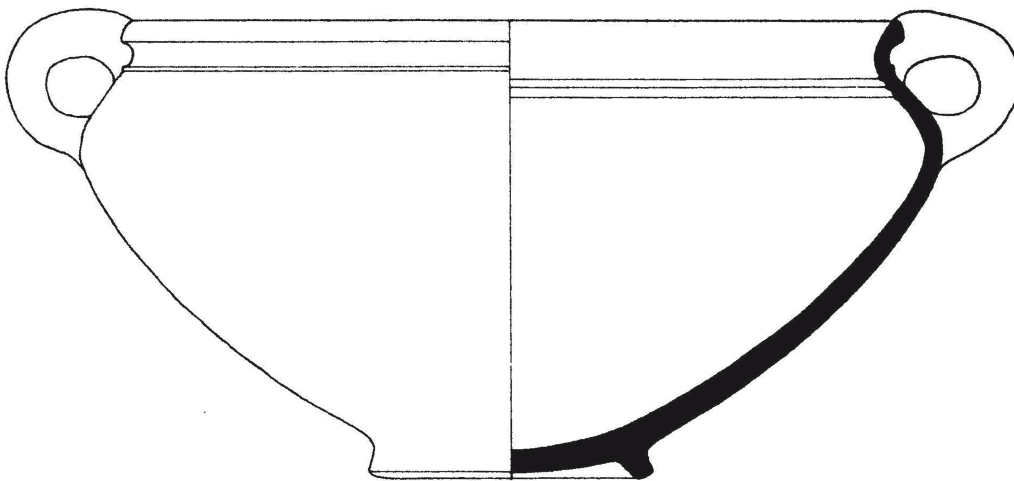
4236



4237

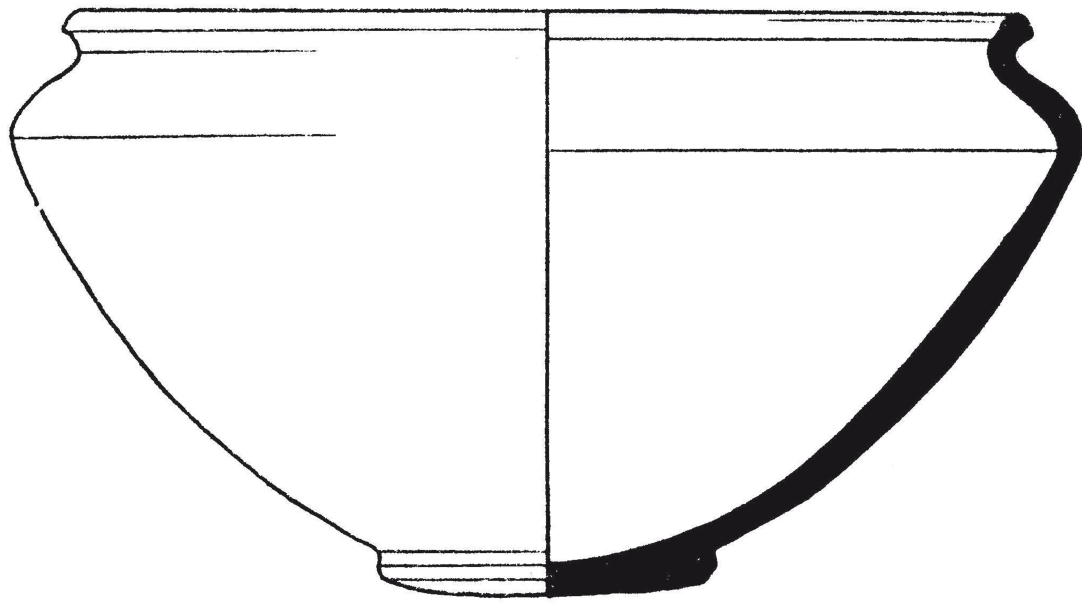


4238

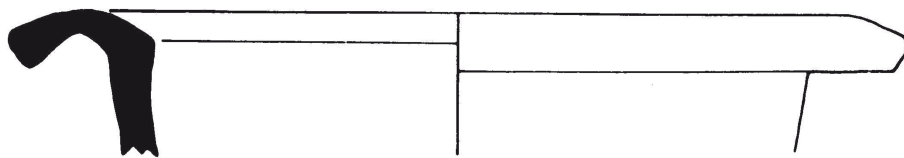


4239

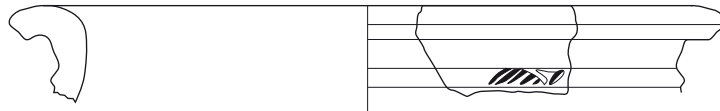
Maßstab 1:3.



4240



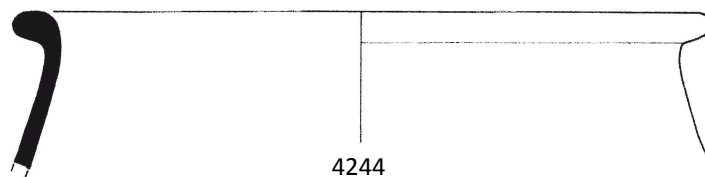
4241



4242

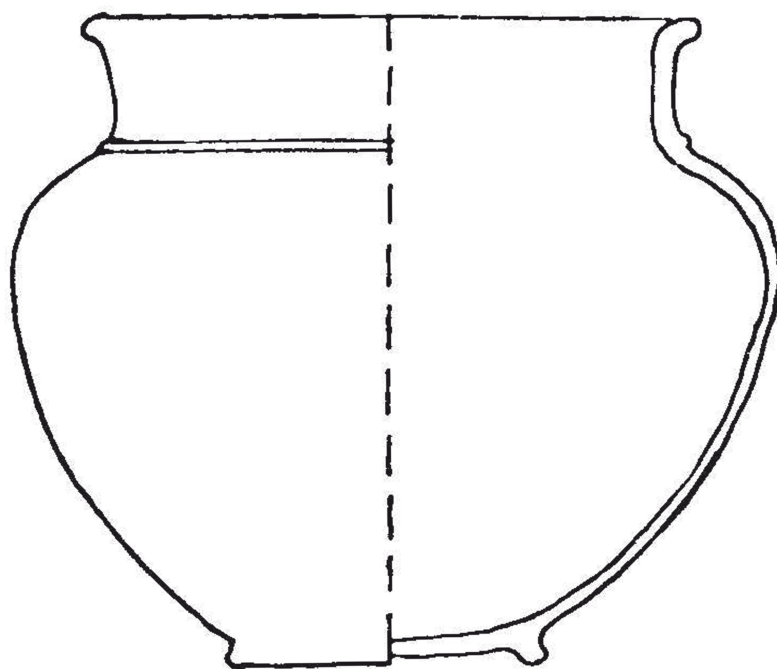


4243

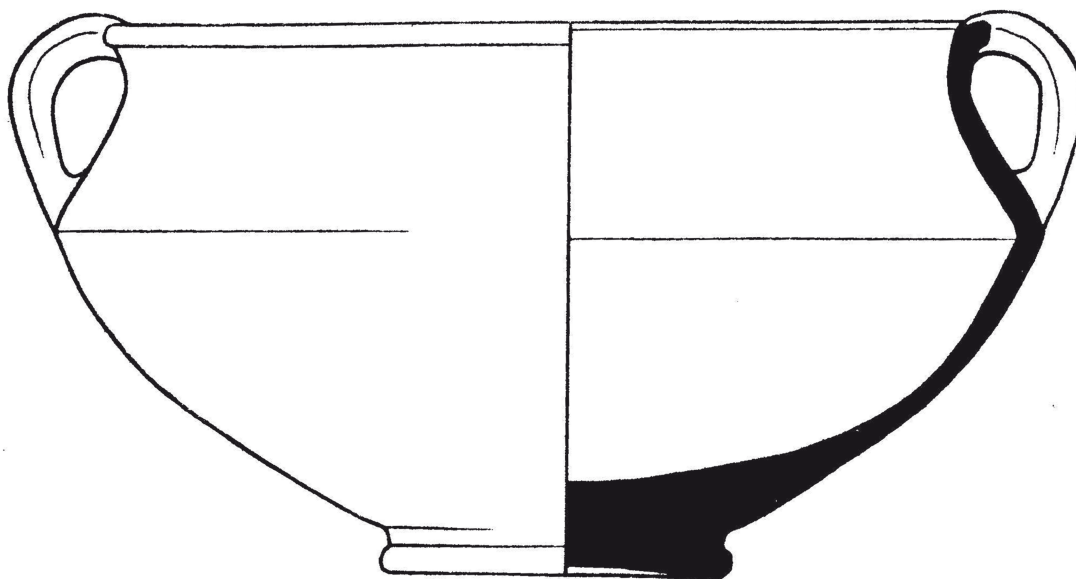


4244

Maßstab 1:3.

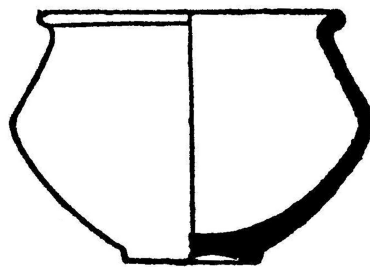


4245

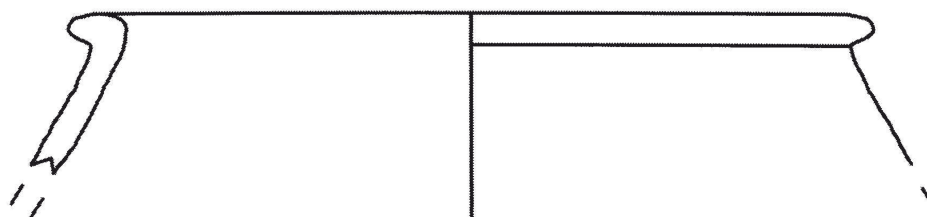


4246

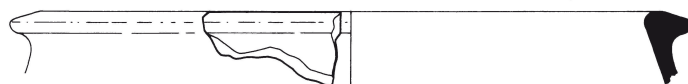
Maßstab 1:3.



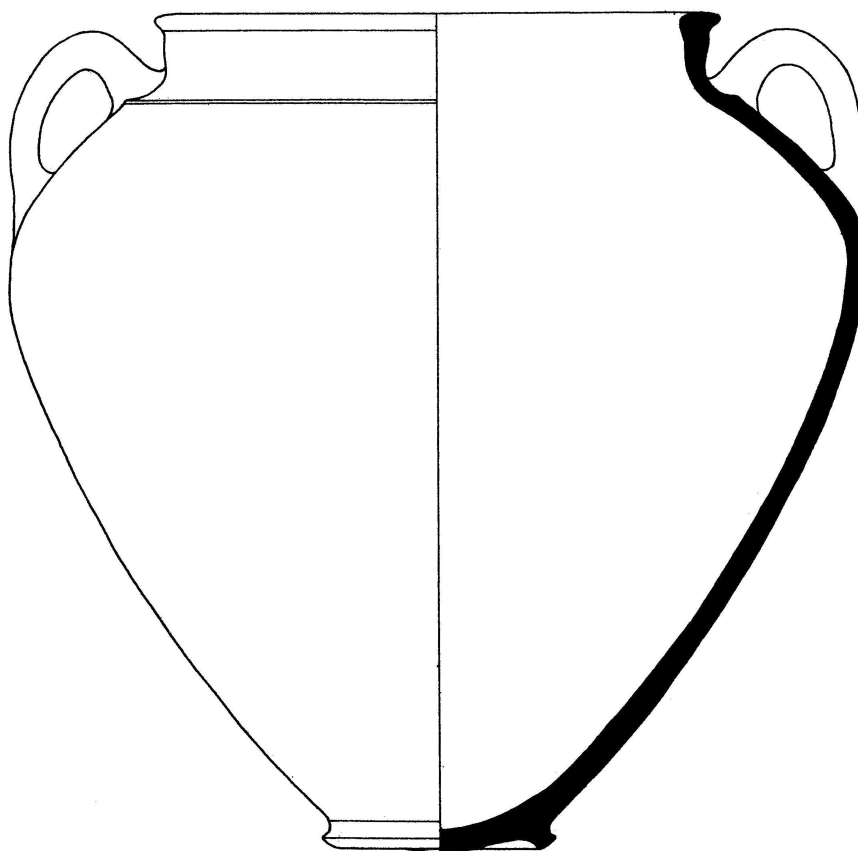
5247



4248

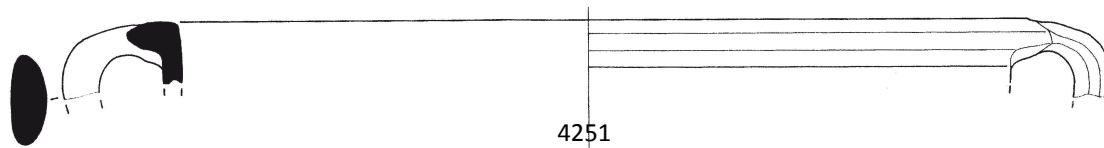


4249

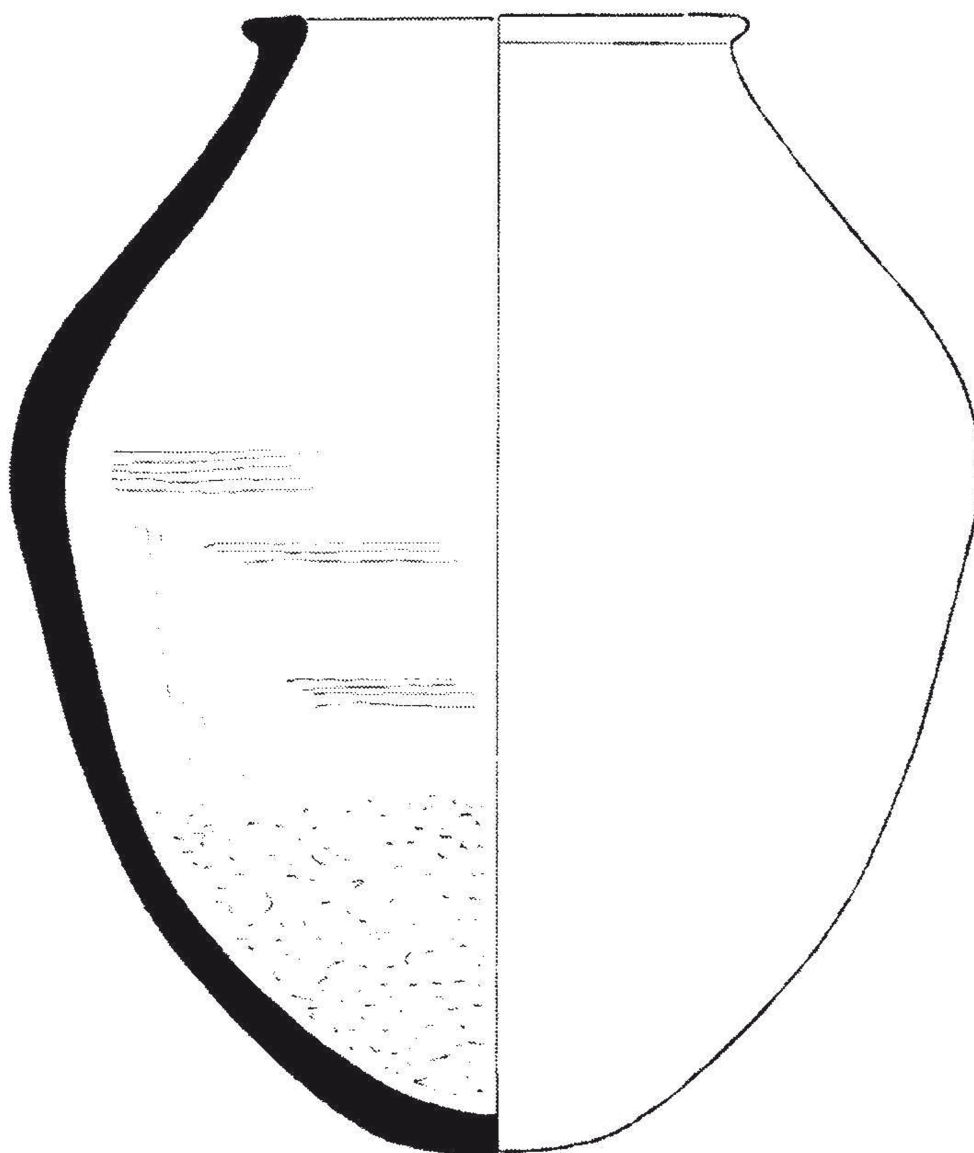


4250

4247-4249: Maßstab 1:3, 4250: Maßstab 1:5.



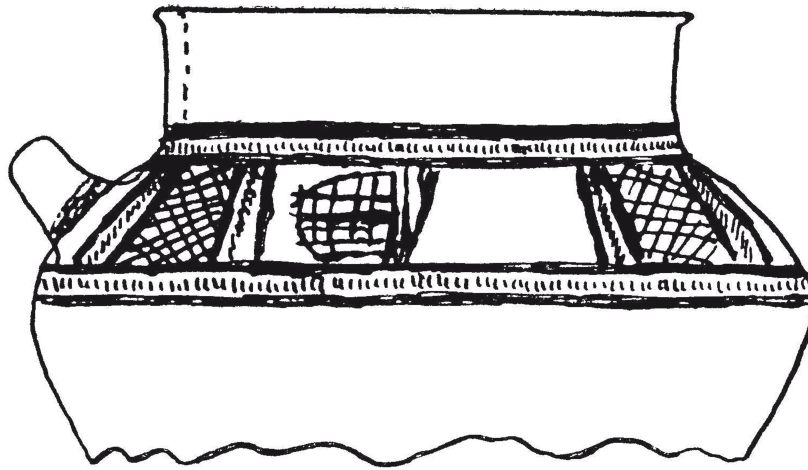
4251



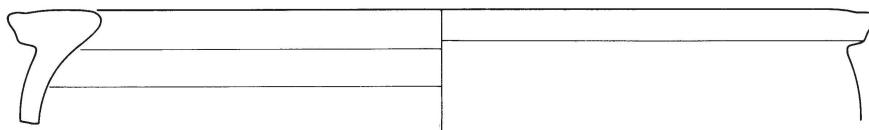
4252

4251: Maßstab 1:4, 4252: Maßstab 1:3.

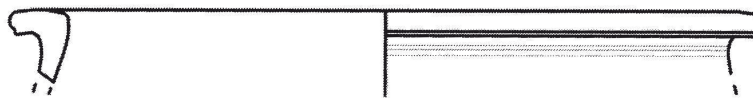
4251: Monchambert 2004: 132 fig. 51.782, 4252: Yener 2010: 224 A03-R1844.



4253



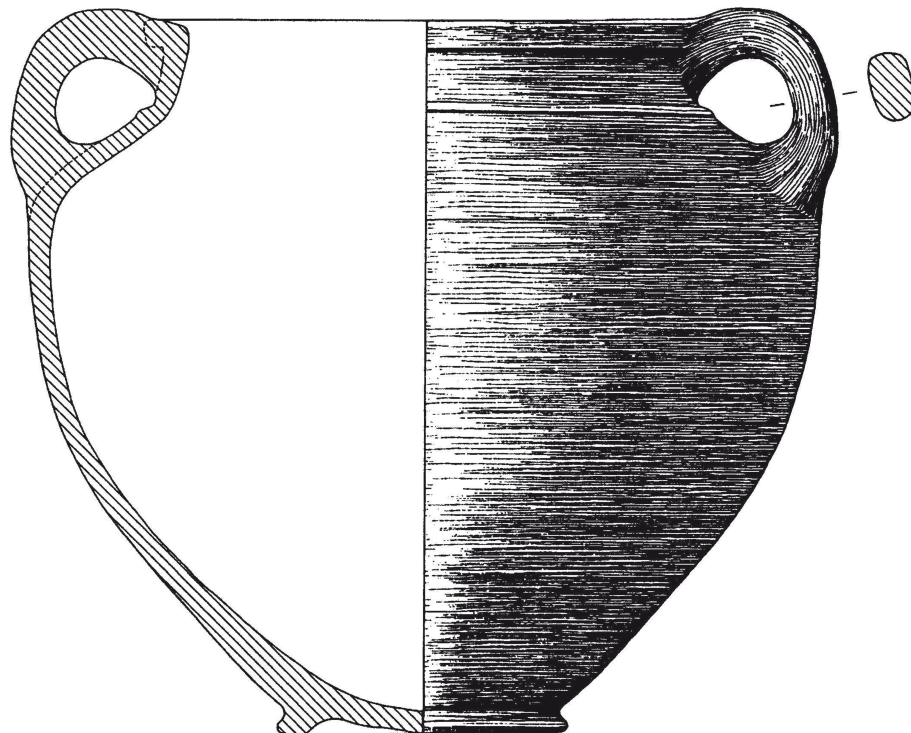
4254



4255



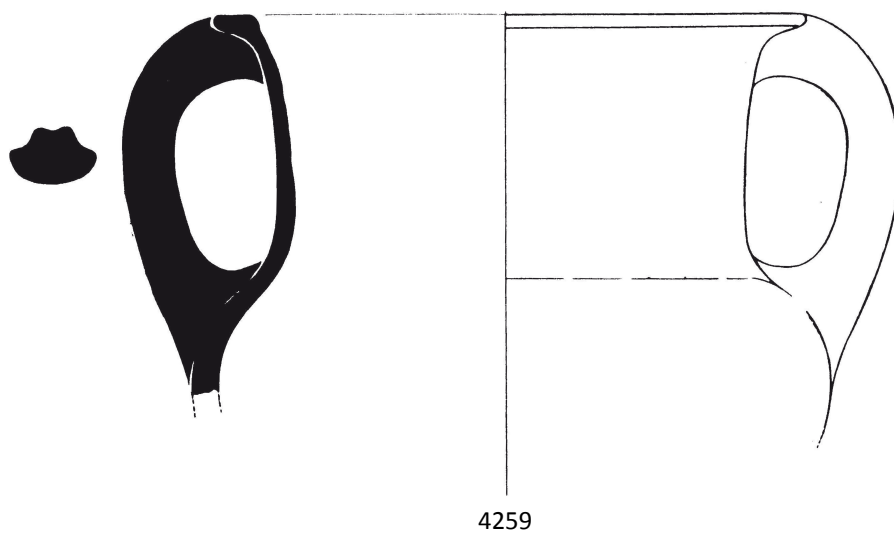
4256



4257

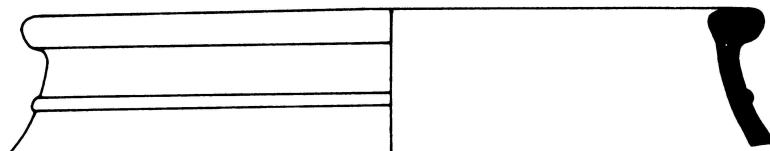
4253: Maßstab unbekannt, 4254-4257: Maßstab 1:3.

4253: Tufnell 1940: pl. XLIXB.253, 4254: Seeden 1986: 65 pl. 16.120, 4255: Iamoni 2012: pl. 45.5, 4256: Tefnin 1983: 151 fig. 4.17, 4257: Penner 2006: 56 Abb. 21.8, Copyright Universität des Saarlandes, Fachrichtung Altertumskunde, Abt. Vor- und Frühgeschichte und Vorderasiatische Archäologie.

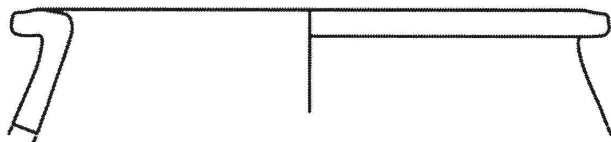


4258: Maßstab 1:4, 4259: Maßstab 1:3

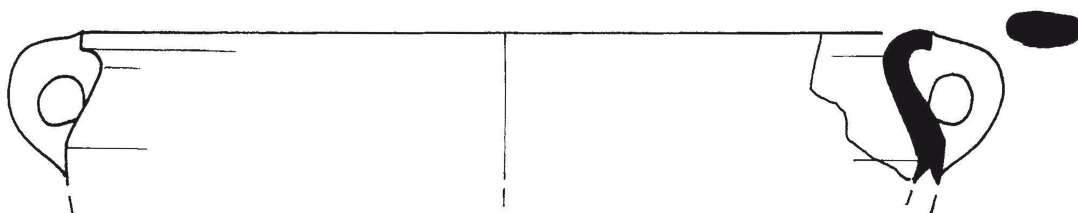
4258: Courtois 1978: 347 fig. 54.1, 4259: Gachet 1996: 175 fig. 20.104.



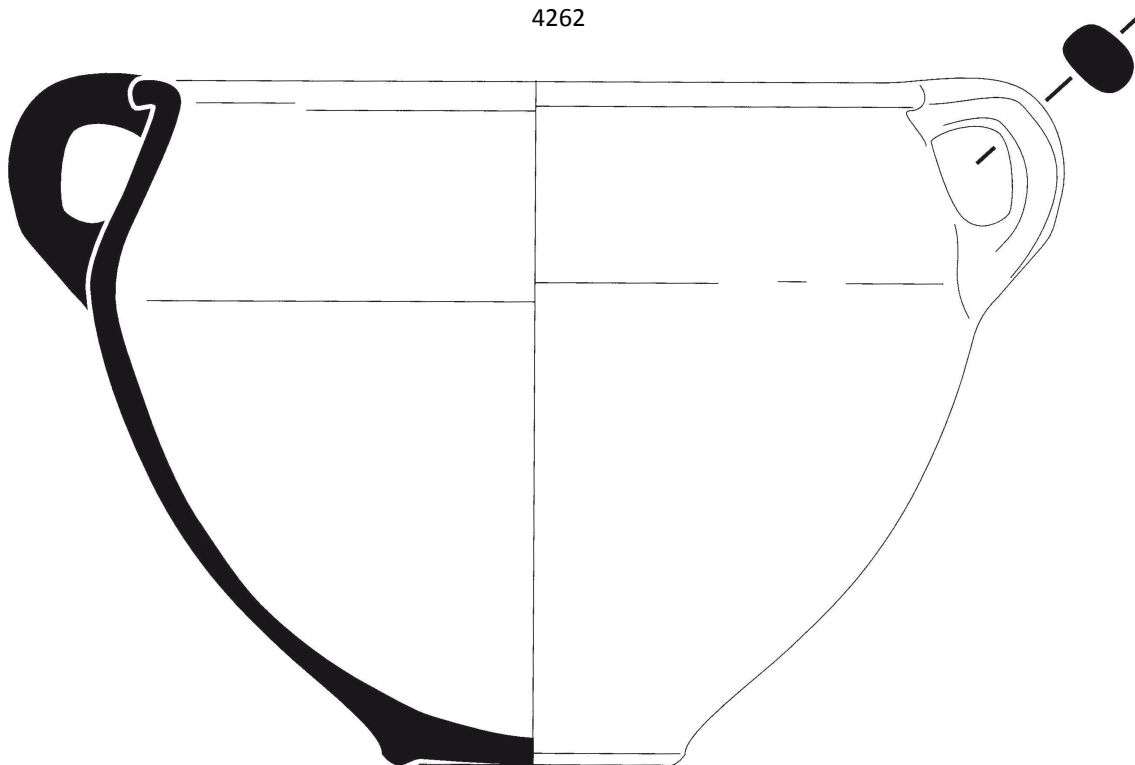
4260



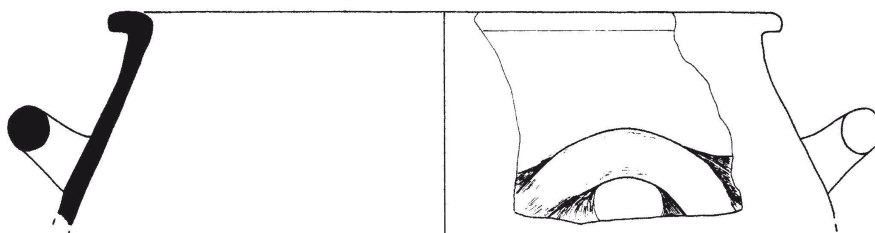
4261



4262



4263



4264

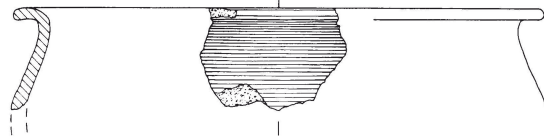
Maßstab 1:3.



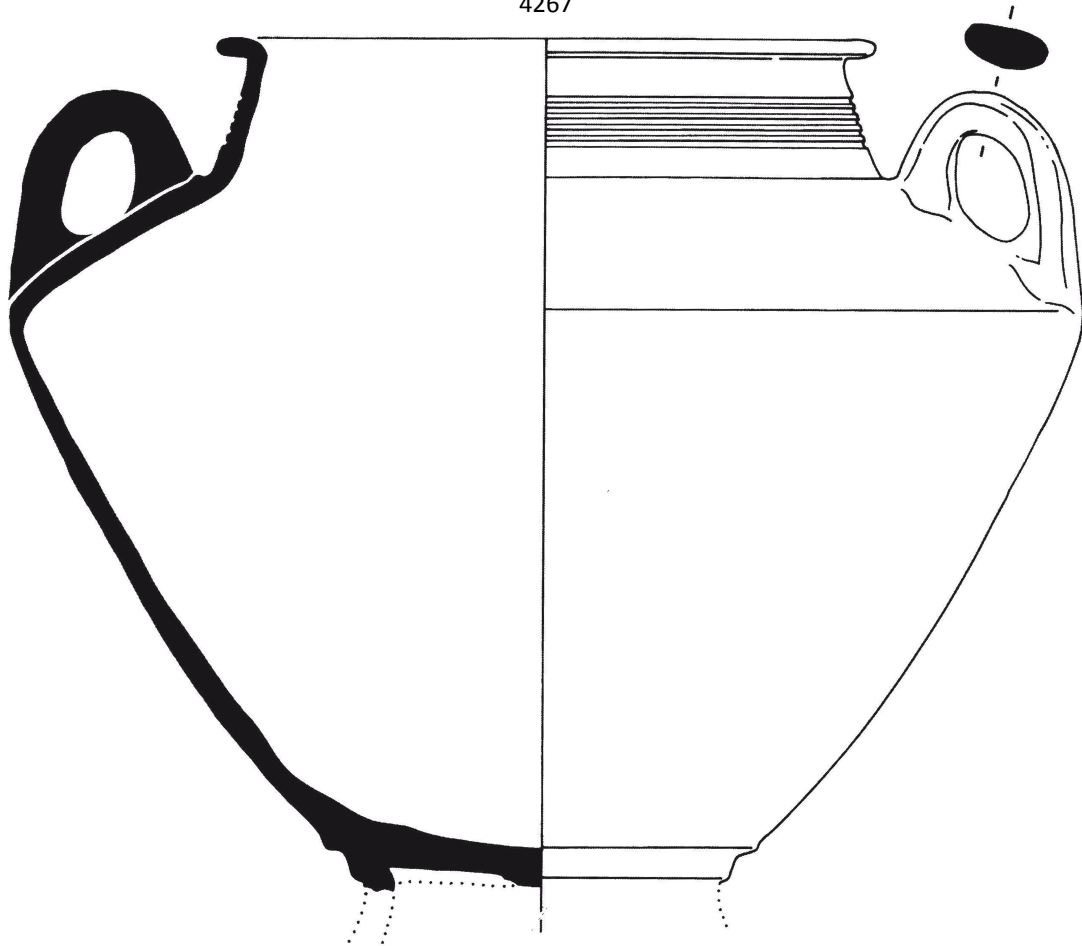
4265



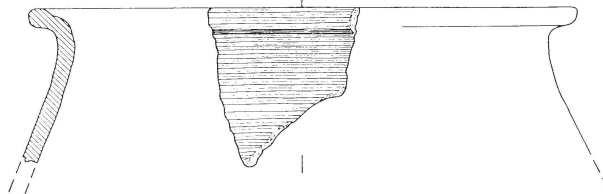
4266



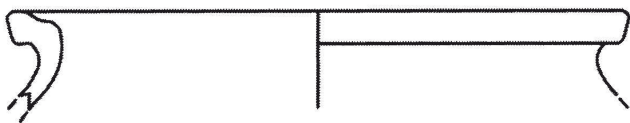
4267



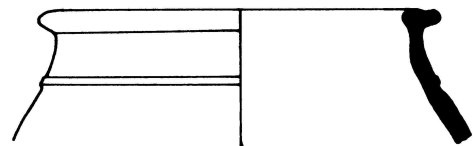
4268



4269



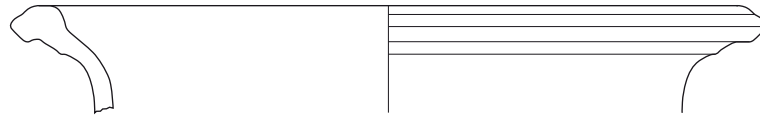
4270



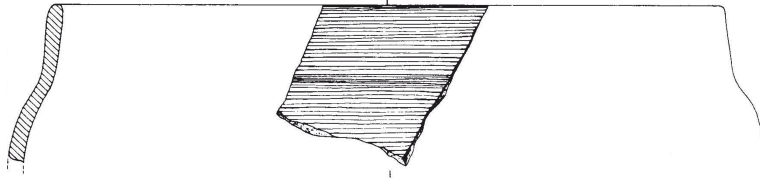
4271

Maßstab 1:3.

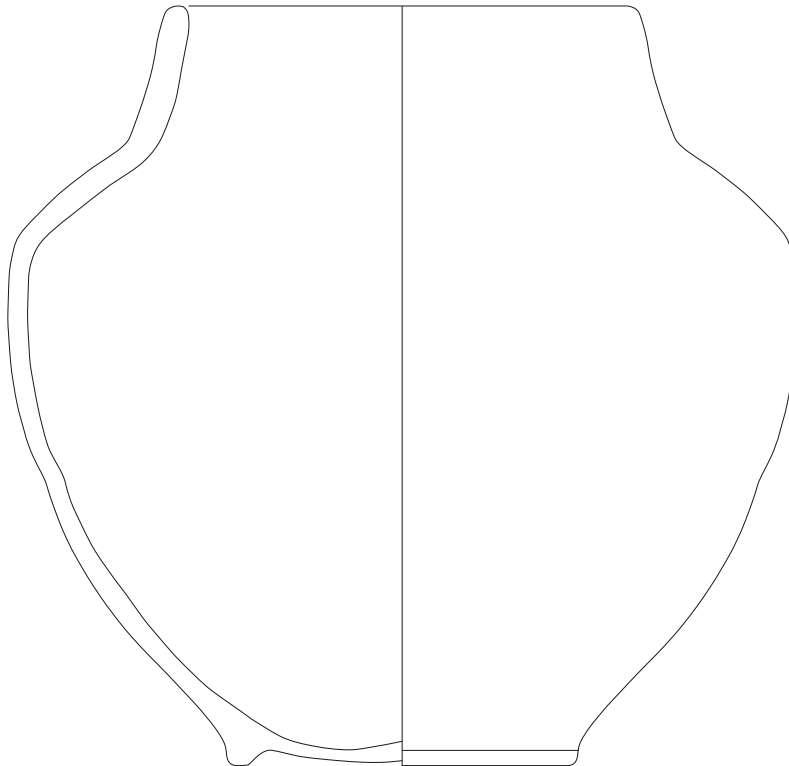
4265: MSH08G-q1091_1331, Qatna-Projekt Universität Tübingen, 4266: Franken 1992: 125 fig. 7-7.32, 4267: Adler - Penner 2001: Taf. 73.10, Copyright Universität des Saarlandes, Fachrichtung Altertumskunde, Abt. Vor- und Frühgeschichte und Vorderasiatische Archäologie, 4268: Thalman 2006: pl. 108.8, 4269: Adler - Penner 2001: Taf. 45.1, Copyright Universität des Saarlandes, Fachrichtung Altertumskunde, Abt. Vor- und Frühgeschichte und Vorderasiatische Archäologie, 4270: Iamoni 2012: pl. 47.3, 4271: Dornemann 1981: 44 fig. 14.23.



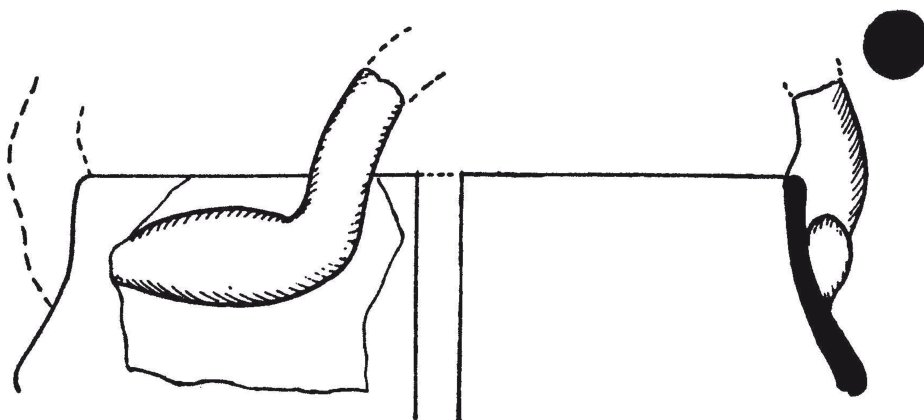
4272



4273



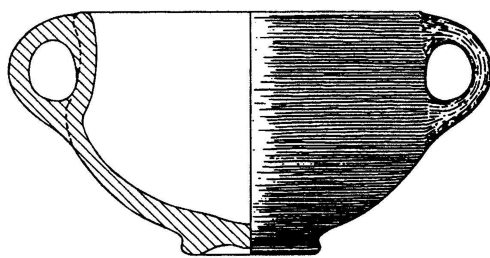
4274



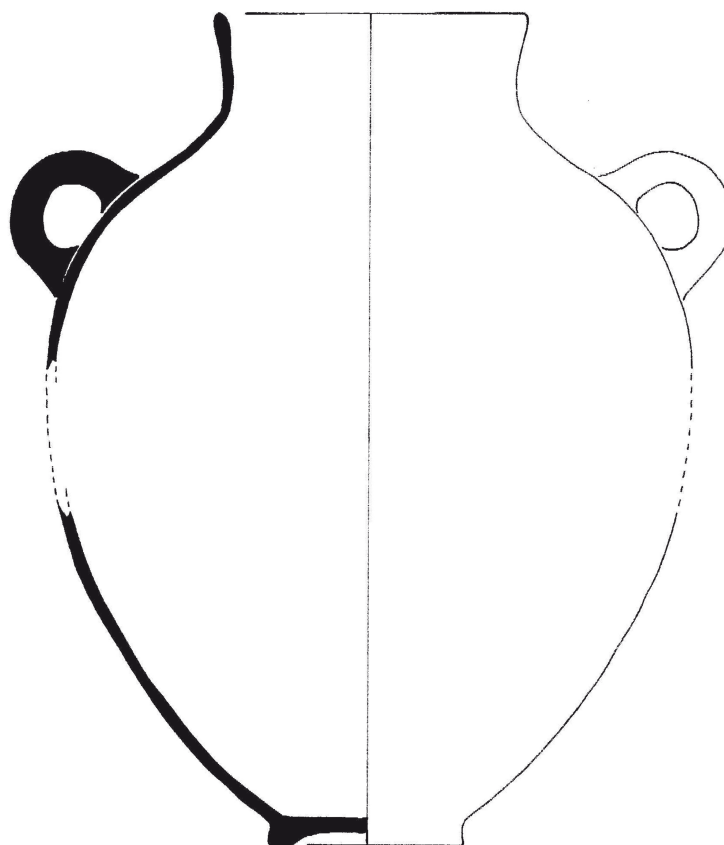
4275

4272-4273, 4275: Maßstab 1:3, 4274: Maßstab 1:4.

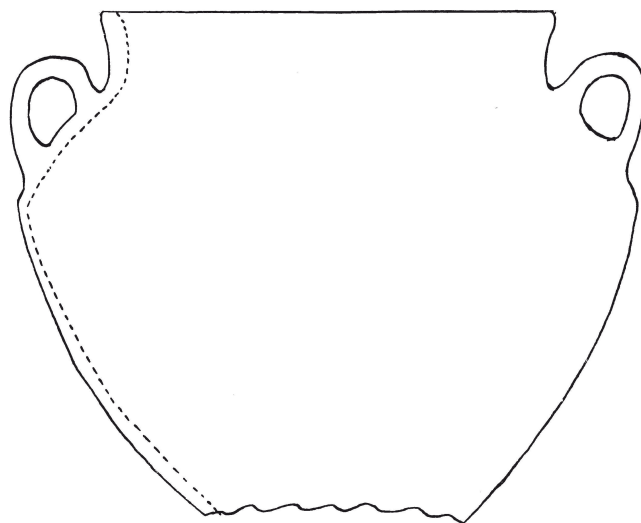
4272: MSH08G-q1091_242, Qatna-Projekt Universität Tübingen, 4273: Metzger 1993: Taf. 114.26, Copyright Universität des Saarlandes, Fachrichtung Altertumskunde, Abt. Vor- und Frühgeschichte und Vorderasiatische Archäologie, 4274: MSH08G-i0192_1, Qatna-Projekt Universität Tübingen, 4275: Yadin et al. 1961: pl. CCXLI.6, mit freundlicher Genehmigung Israel Exploration Society.



4276

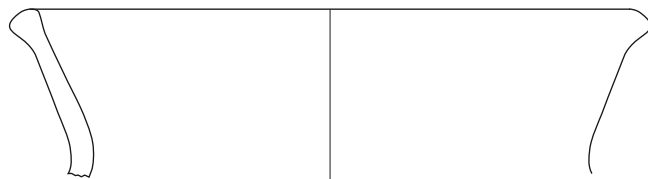


4277

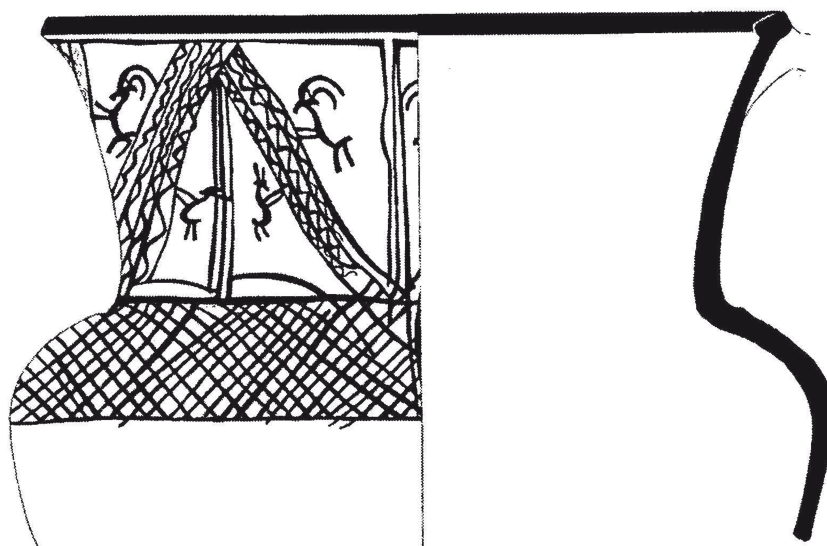


4278

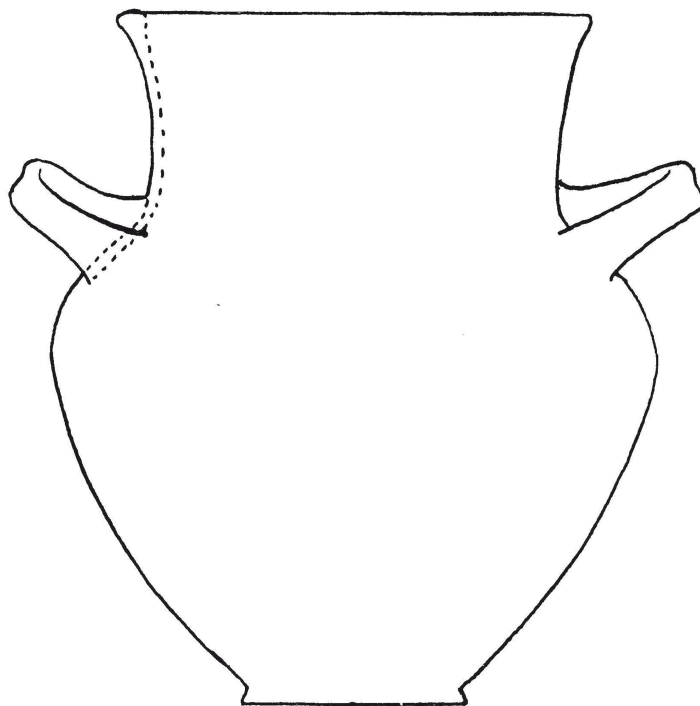
4276: Maßstab 1:3, 4277: Maßstab 1:6, 4278: Maßstab unbekannt.



4279

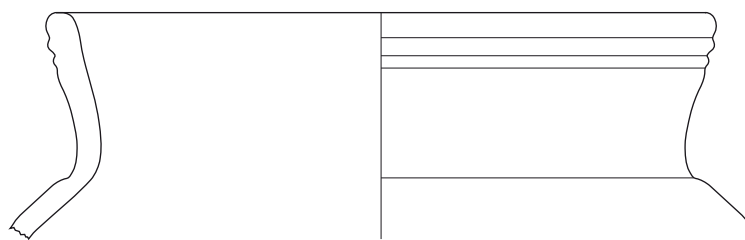


4280

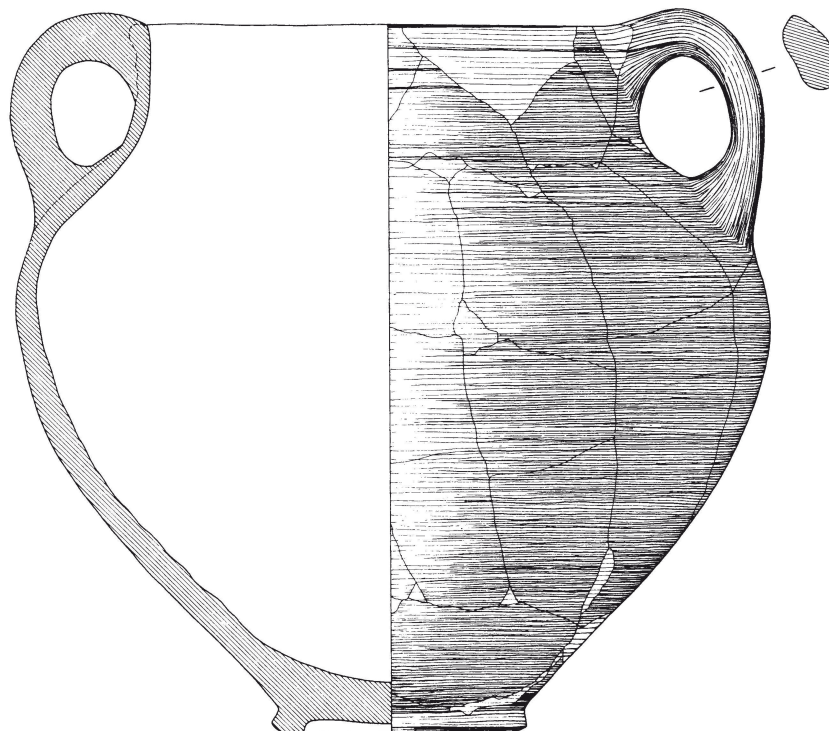


4281

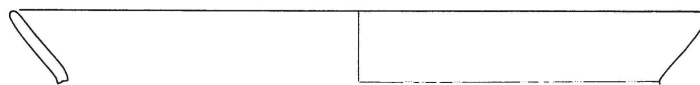
4279-4280: Maßstab 1:3, 4281: Maßstab unbekannt.



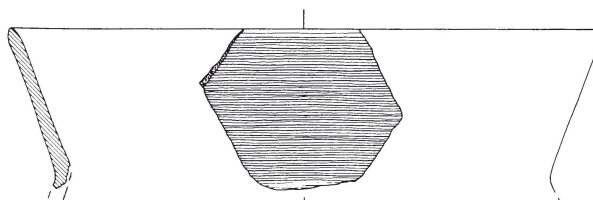
4282



4283



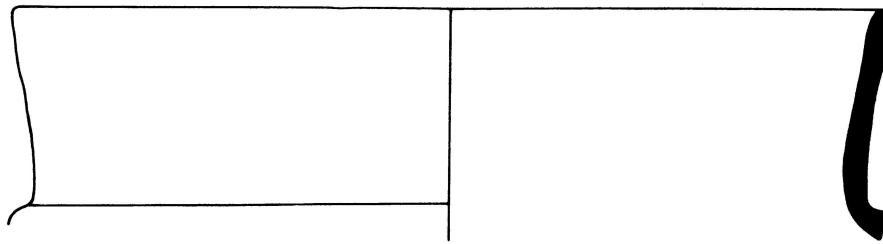
4284



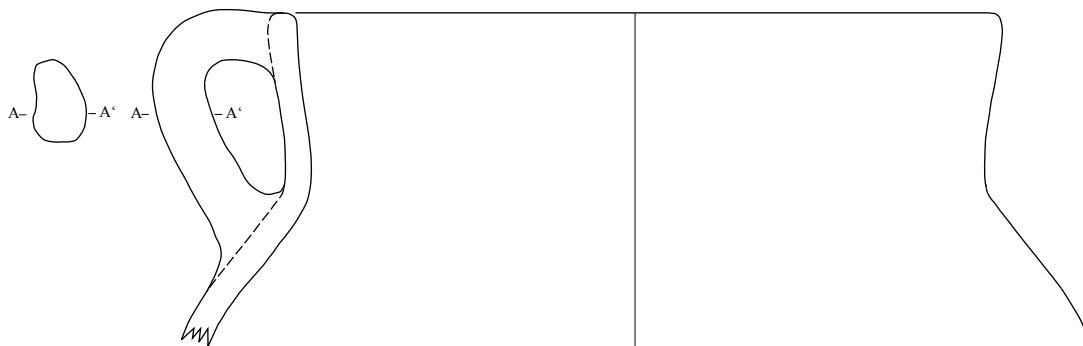
4285

Maßstab 1:3.

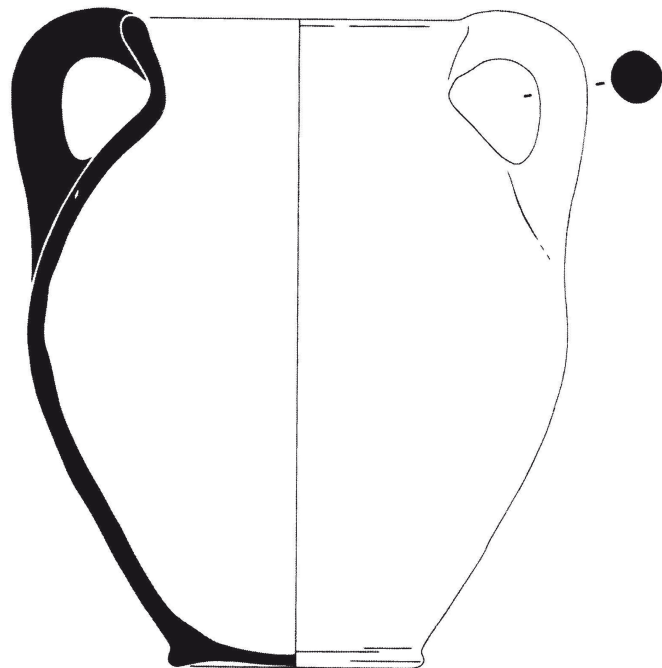
4282: MSH08G-q1091_271, Qatna-Projekt Universität Tübingen, 4283: Metzger 1993: Taf. 105.1, Copyright Universität des Saarlandes, Fachrichtung Altertumskunde, Abt. Vor- und Frühgeschichte und Vorderasiatische Archäologie, 4284: Seeden 1986: 71 pl. 19.217, 4285: Adler - Penner 2001: Taf. 15.7, Copyright Universität des Saarlandes, Fachrichtung Altertumskunde, Abt. Vor- und Frühgeschichte und Vorderasiatische Archäologie.



4286

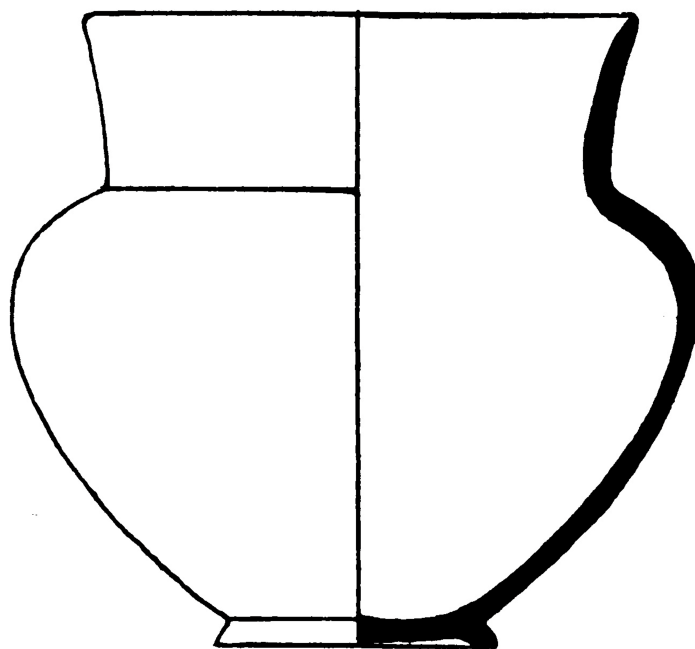


4287

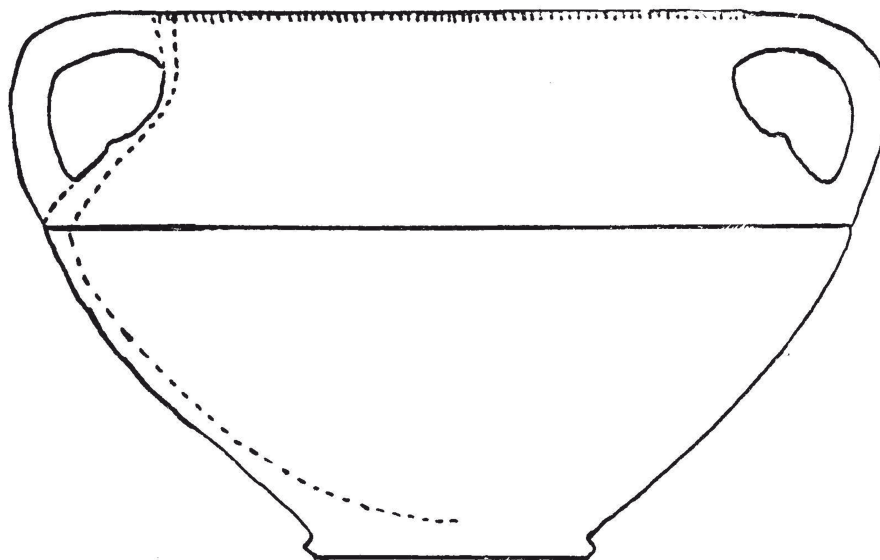


4288

Maßstab 1:3.



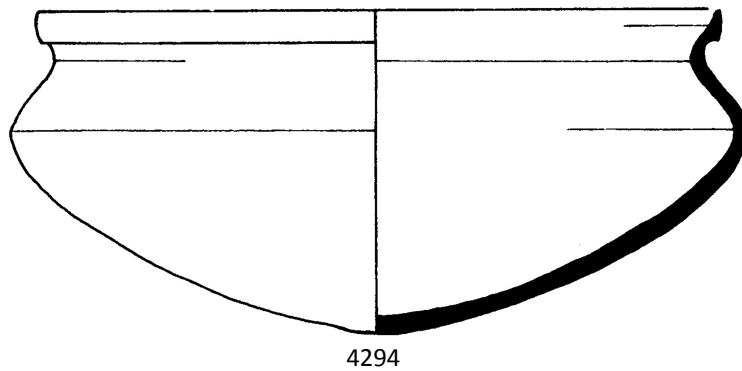
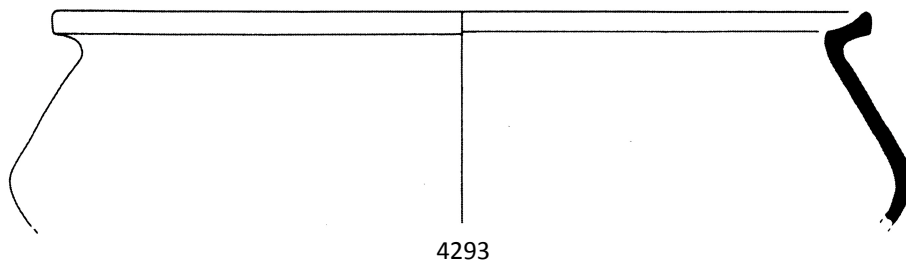
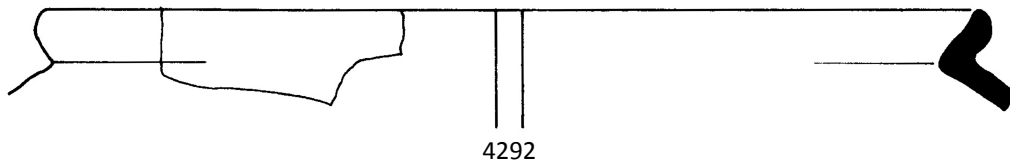
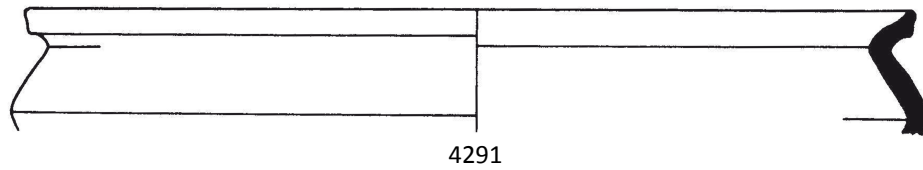
4289



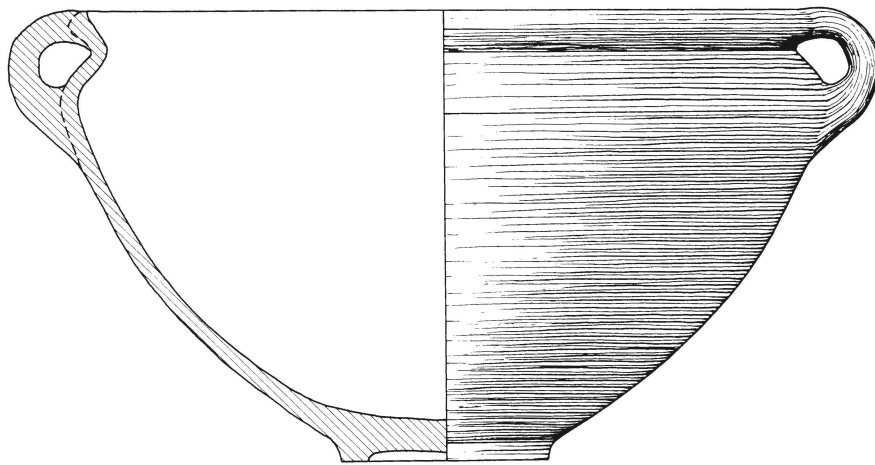
4290

4289: Maßstab 1:3, 4290: Maßstab unbekannt.

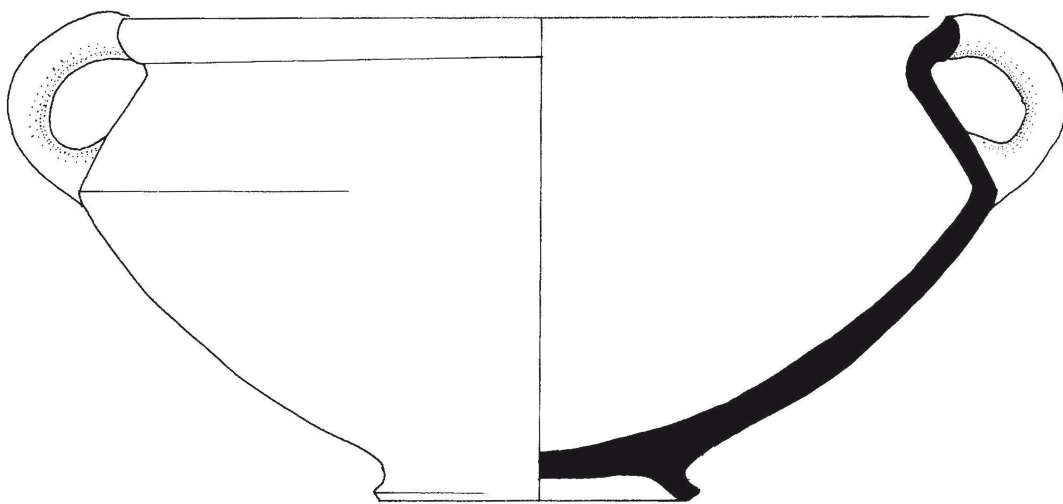
4289: Woolley 1955: pl. CXIX.106a, 4290: Tufnell 1940: pl. XLVIII.B.252.



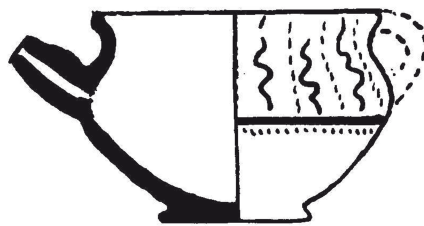
Maßstab 1:3.



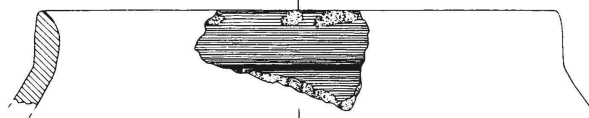
4295



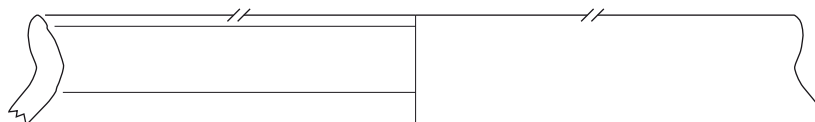
4296



4297



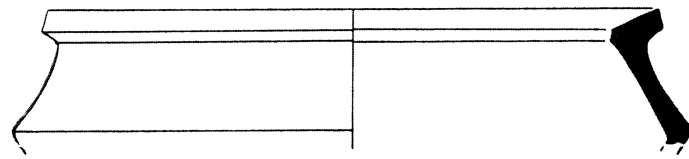
4298



4299

4295: Maßstab 1:4, 4296, 4298-4299: Maßstab 1:3, 4297: Maßstab unbekannt.

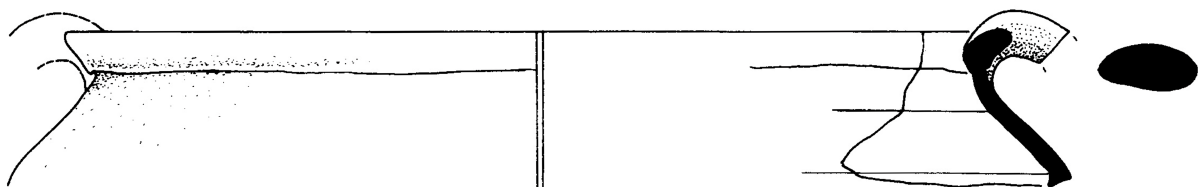
4295: Adler - Penner 2001: Taf. 94.3, Copyright Universität des Saarlandes, Fachrichtung Altertumskunde, Abt. Vor- und Frühgeschichte und Vorderasiatische Archäologie, 4296: Mazar - Mullins 2007: 541 pl. 76.8, 4297: Tufnell 1958: pl. 82.932, 4298: Metzger 1993: Taf. 114.25, Copyright Universität des Saarlandes, Fachrichtung Altertumskunde, Abt. Vor- und Frühgeschichte und Vorderasiatische Archäologie, 4299: MSH00G-q0575_7, Qatna-Projekt Universität Tübingen.



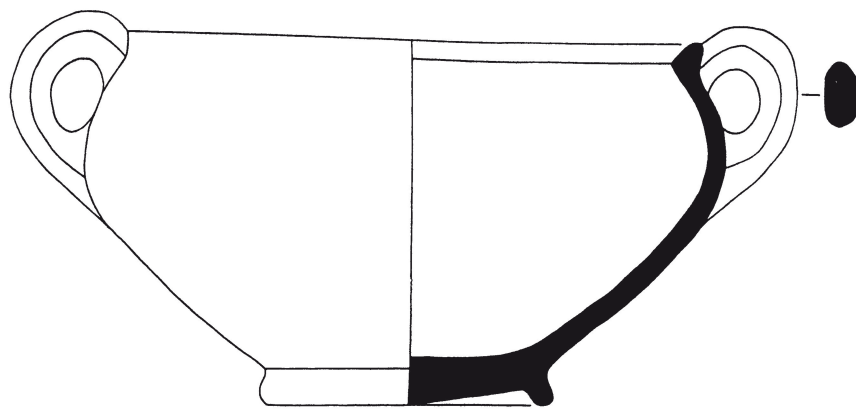
4300



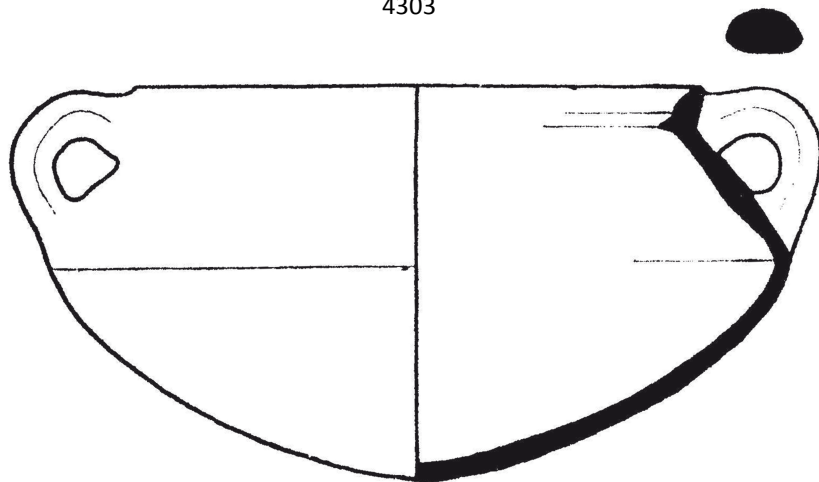
4301



4302

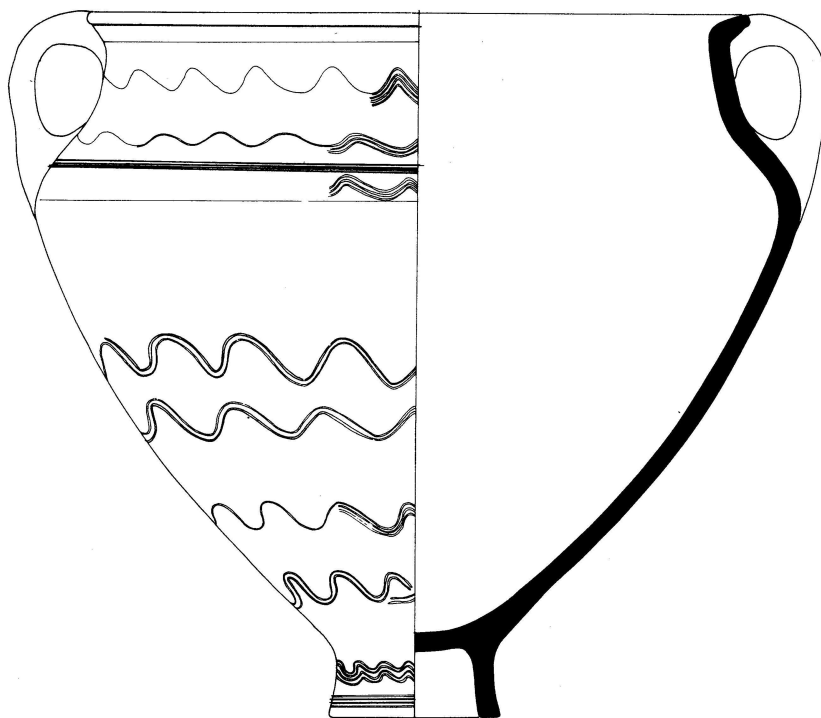


4303

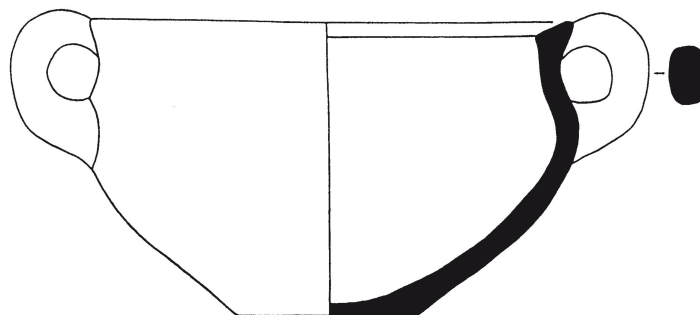


4304

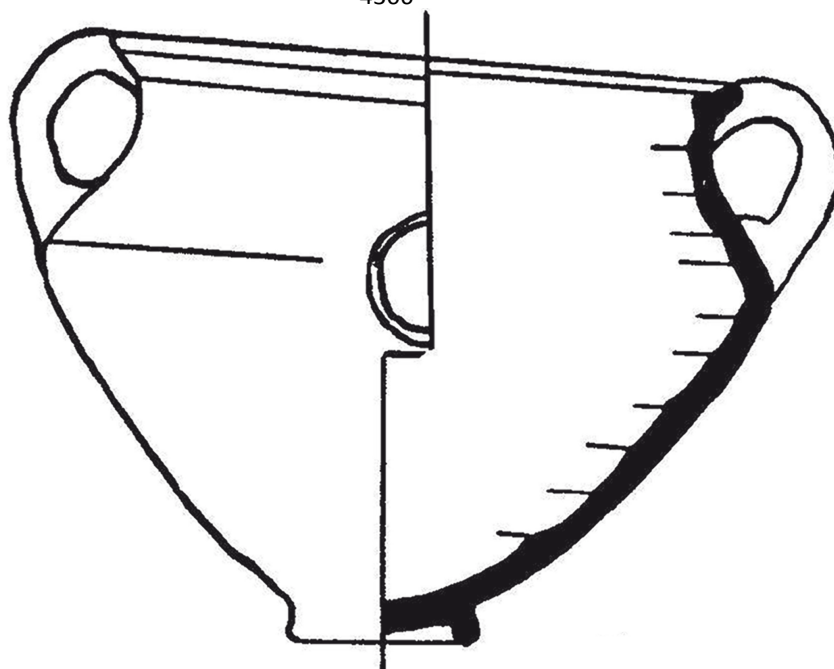
Maßstab 1:3.



4305

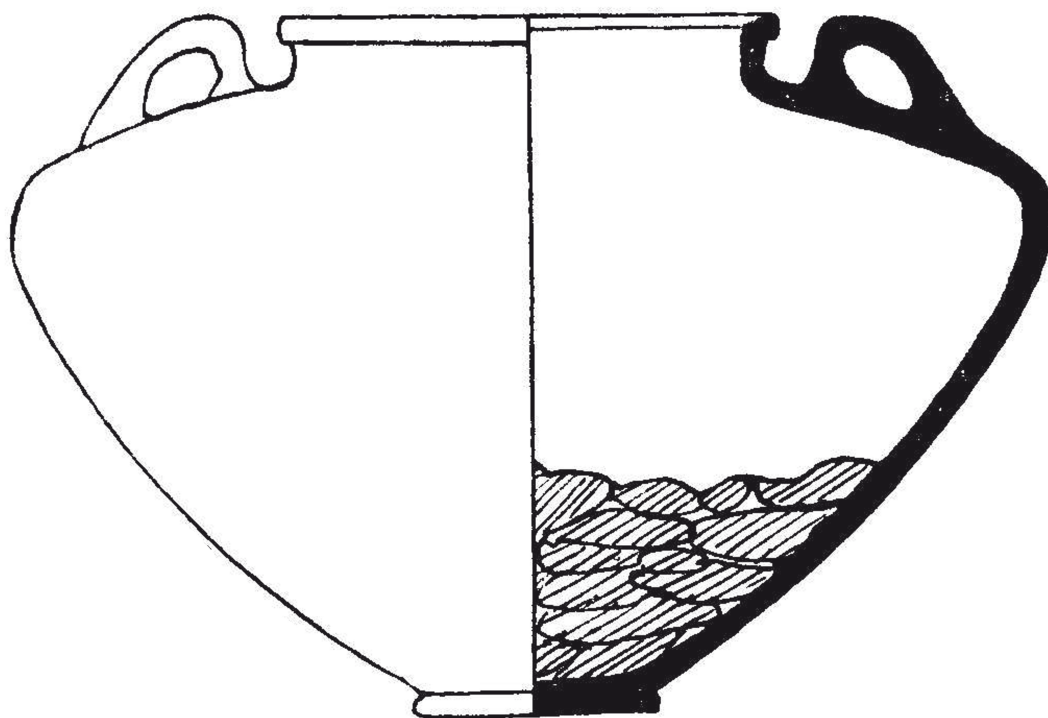


4306

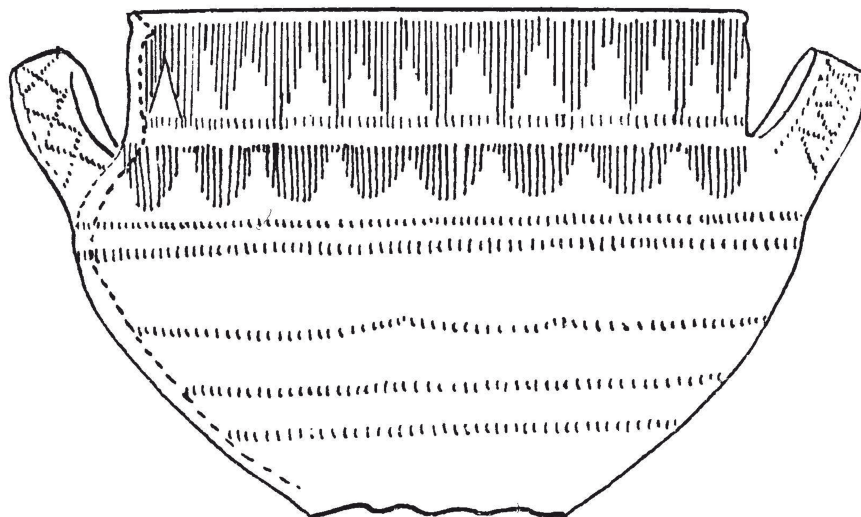


4307

4305: Maßstab 1:4, 4306-4307: Maßstab 1:3.



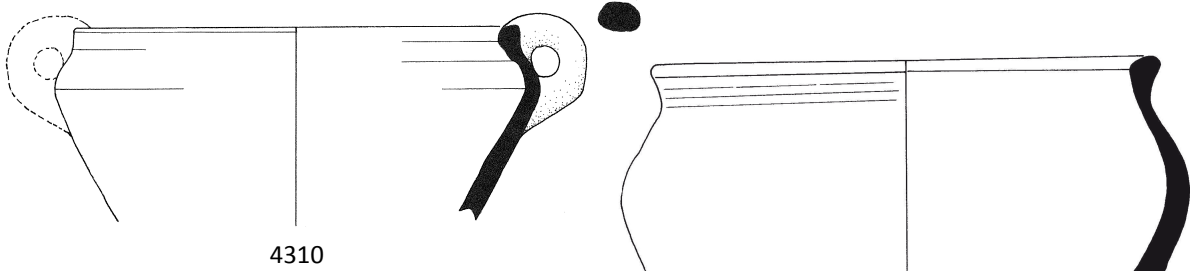
4308



4309

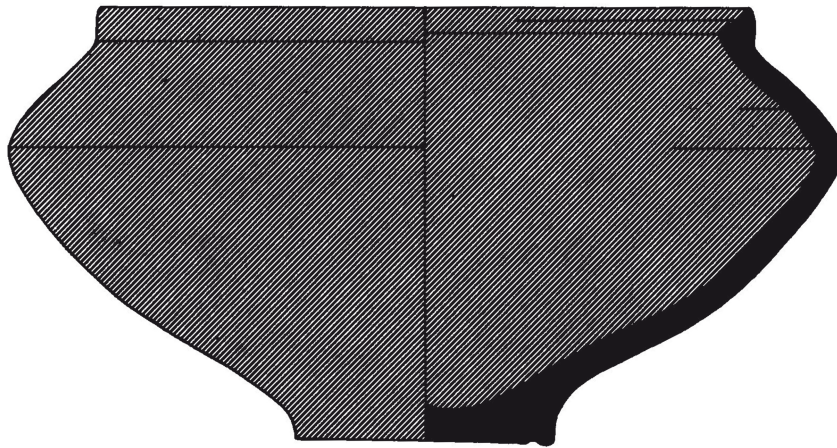
4308: Maßstab 1:6, 4309: Maßstab unbekannt.

4308: Schaeffer 1949: 209 fig. 86.16, 4309: Tufnell 1940: pl. XLVIII.B.245.

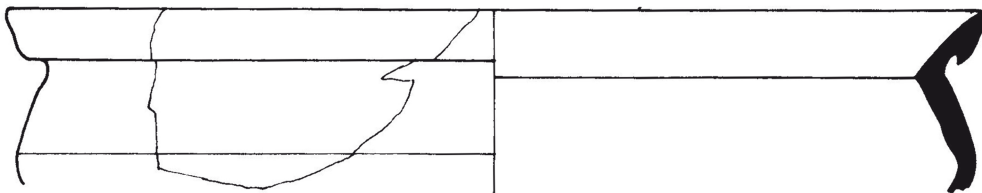


4310

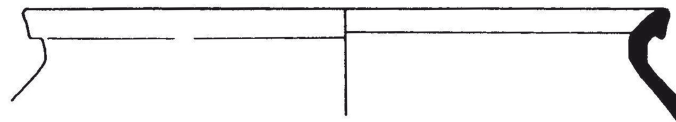
4311



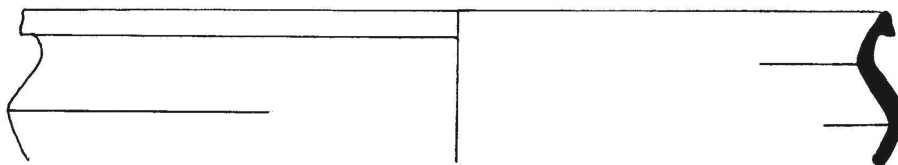
4312



4313



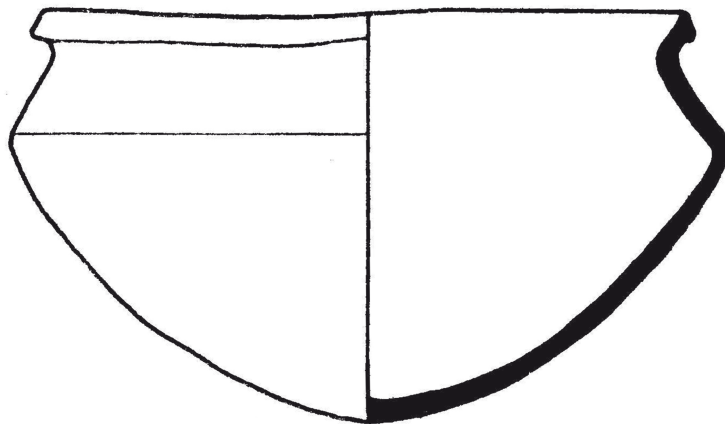
4314



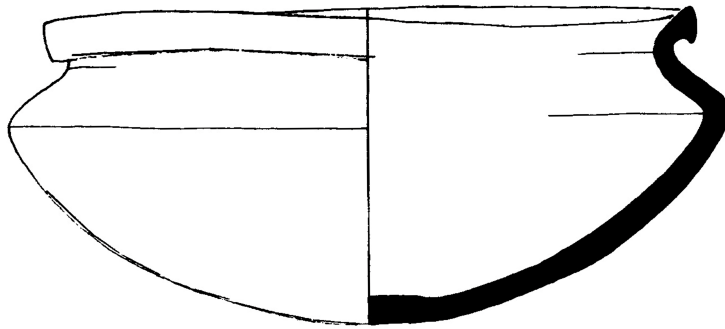
4315

4310: Maßstab 1:6, 4311-4315: Maßstab 1:3.

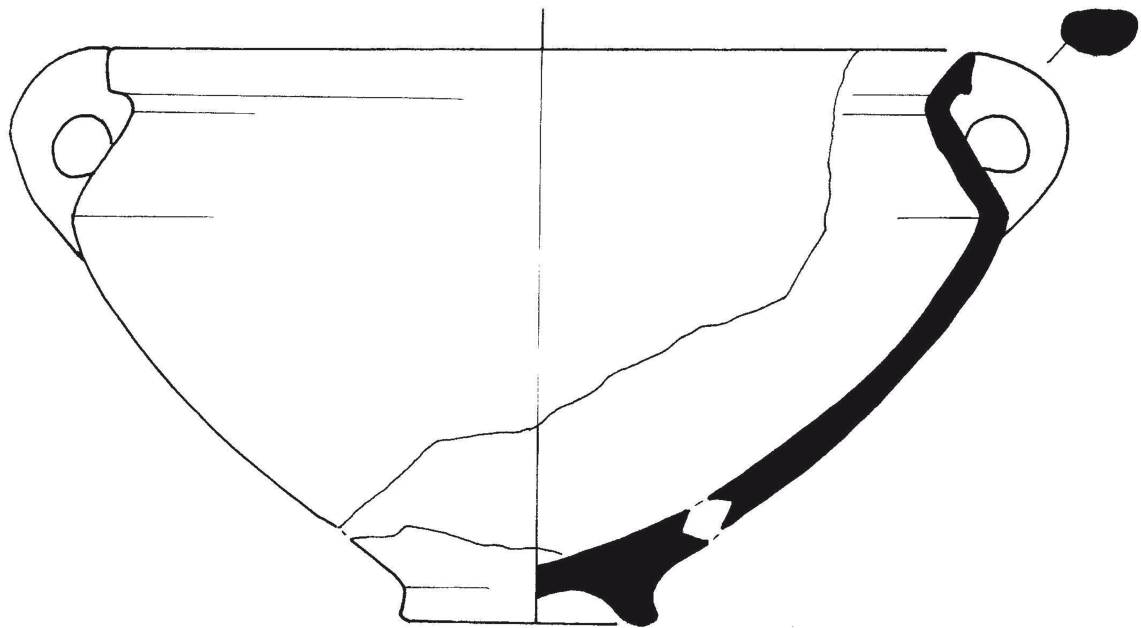
4310: Killebrew 2010: 373 pl. 28.4, 4311: Badre et al. 1994: 325 fig. 49e, 4312: Dothan - Porath 1993: 159 fig. 7.8, mit freundlicher Genehmigung Israel Antiquities Authority, 4313: Dothan - Porath 1993: 163 fig. 9.15, mit freundlicher Genehmigung Israel Antiquities Authority, 4314: Seeger 1988: 189 pl. 9.6, 4315: Clamer 2004: 1195 fig. 20.6.14.



4316

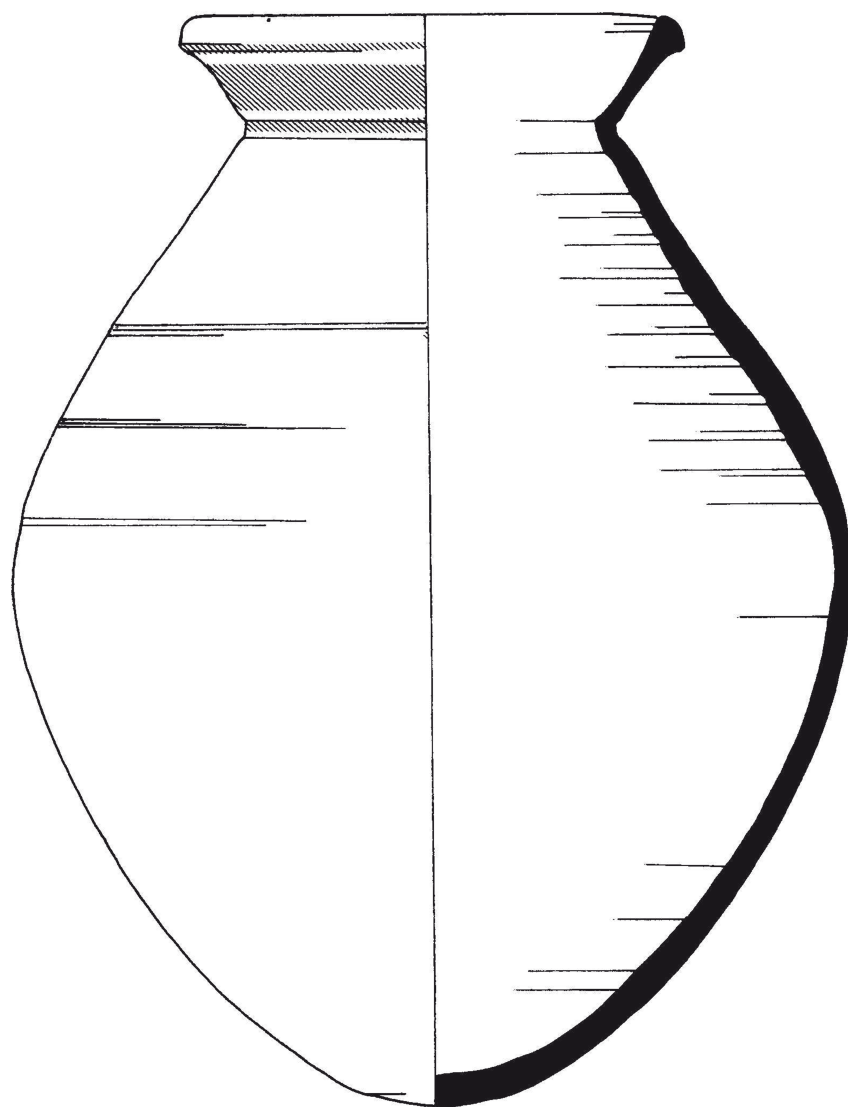


4317

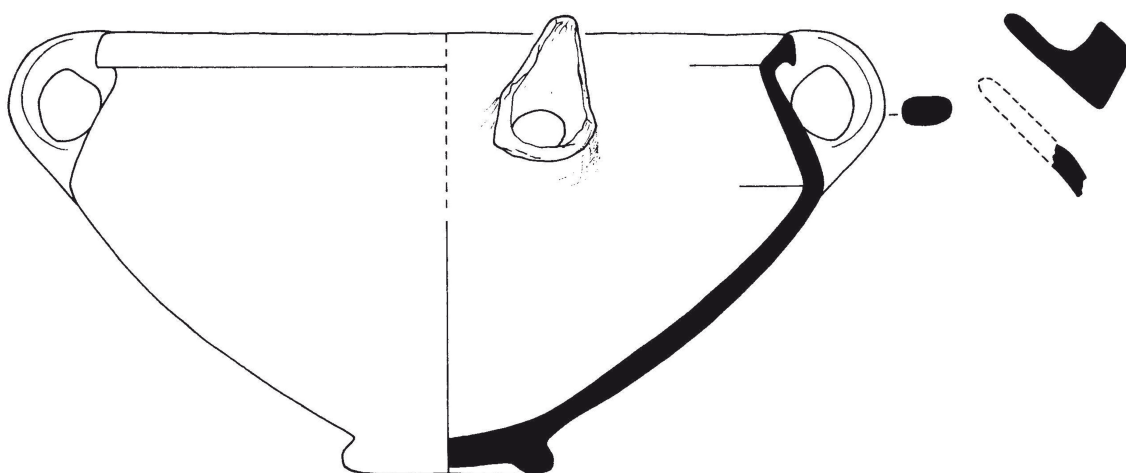


4318

Maßstab 1:3.



4319



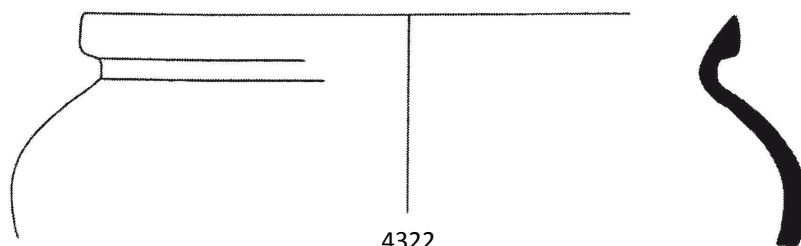
4320

4319: Maßstab 1:3, 4320: Maßstab 1:4.

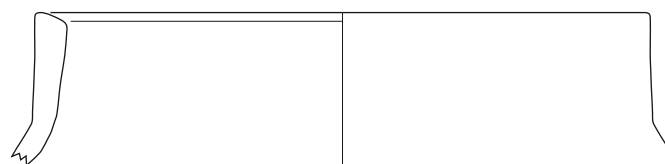
4319: Clamer 2004: 1201 fig. 20.10.11, 4320: Seeger 1988: 189 pl. 9.16.



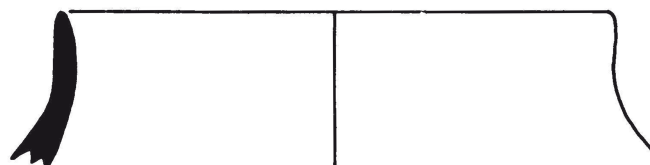
4321



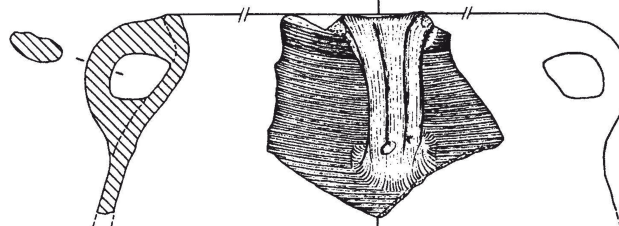
4322



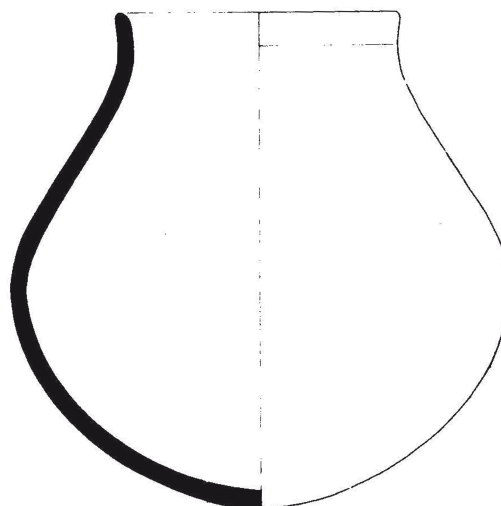
4323



4324



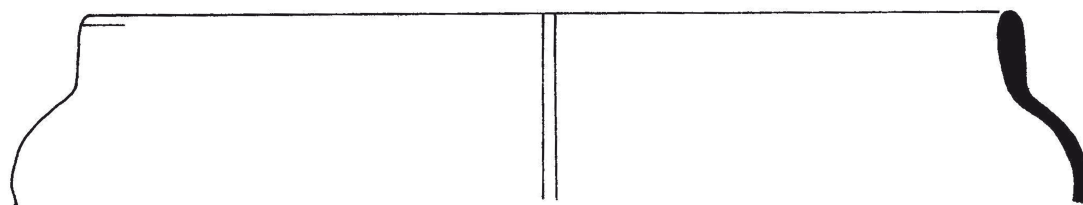
4325



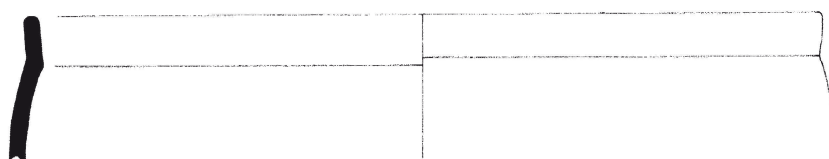
4326

4321-4325: Maßstab 1:3, 4326: Maßstab 1:6.

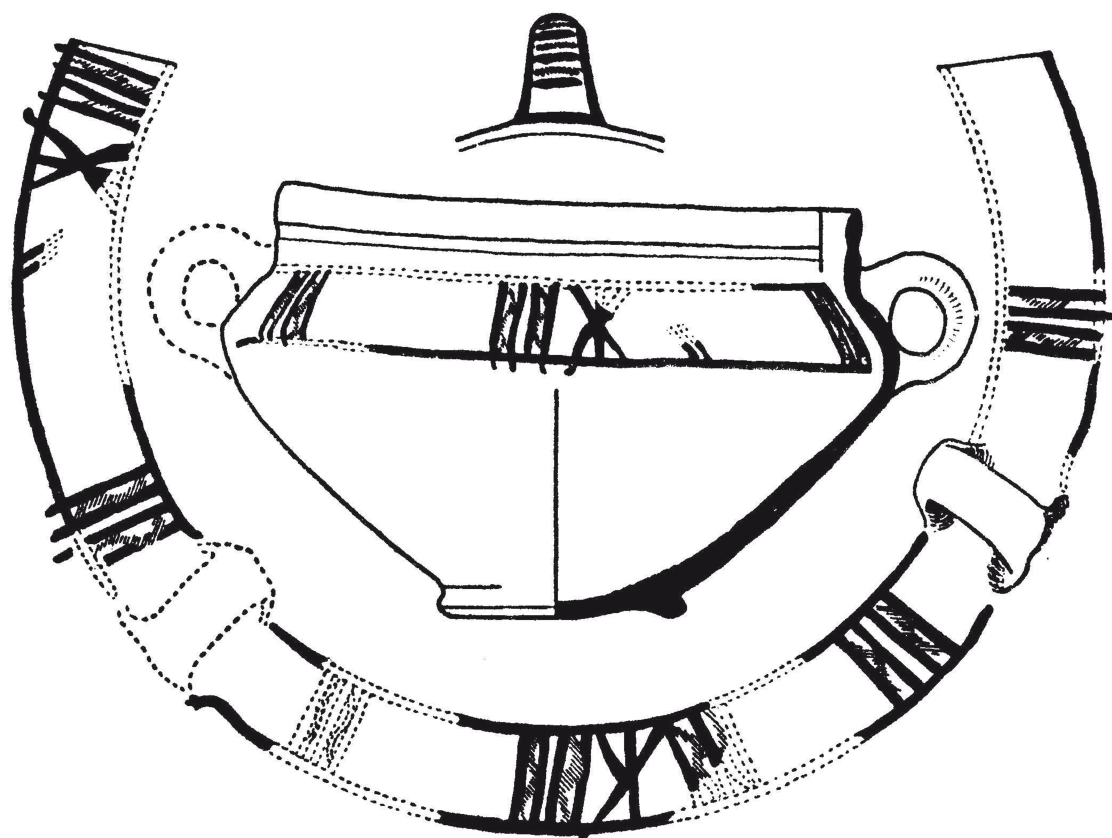
4321: MSH00G-q0342_8, Qatna-Projekt Universität Tübingen, 4322: Fischer - Sadeq 2002: 114 fig. 5.2, 4323: MSH00G-q0395_5, Qatna-Projekt Universität Tübingen, 4324: Bourke 1993: 168 fig. 10.3, Copyright S. Bourke/Tell Nebi Mend Project, UCL London, 4325: Penner 2006: 116 Abb. 62.6, Copyright Universität des Saarlandes, Fachrichtung Altertumskunde, Abt. Vor- und Frühgeschichte und Vorderasiatische Archäologie, 4326: Salles 1980: 94 pl. 26.4.



4327

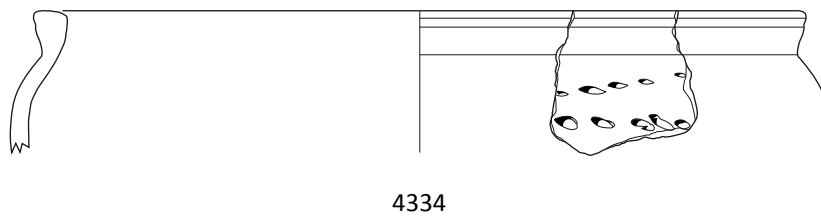
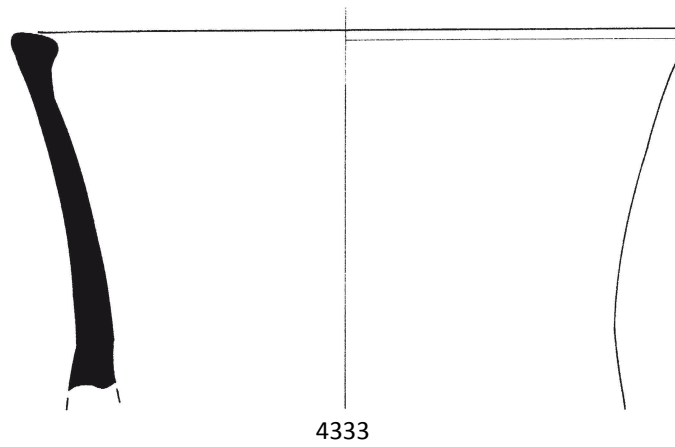
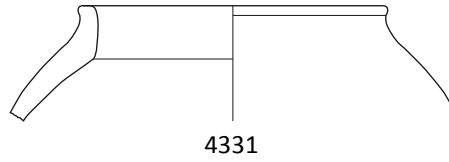
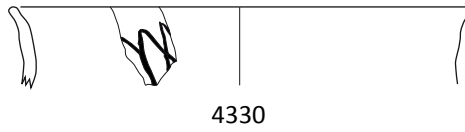


4328



4329

Maßstab 1:3.



Maßstab 1:3.

4330: MSH08G-q1091_1365, Qatna-Projekt Universität Tübingen, 4331: MSH00G-q0575_3, Qatna-Projekt Universität Tübingen, 4332: Fischer 2006: 150 fig. 162.6, 4333: Monchambert 2004: 163 fig. 62.983, 4334: MSH03G-q1487_781, Qatna-Projekt Universität Tübingen.