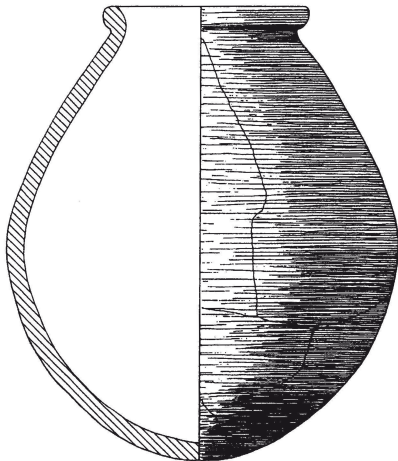
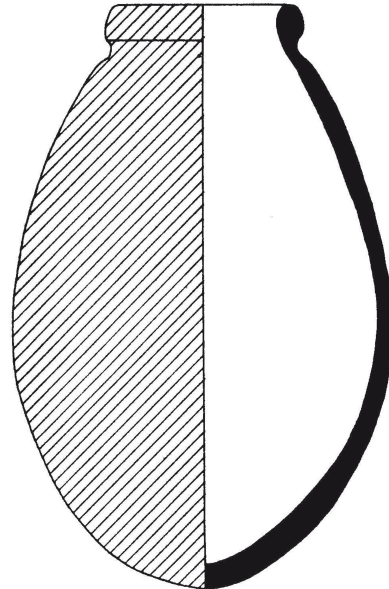




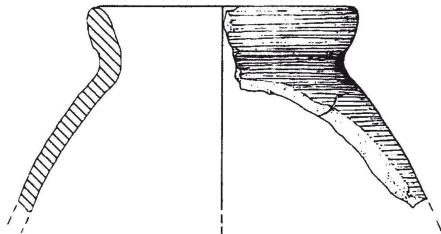
3563



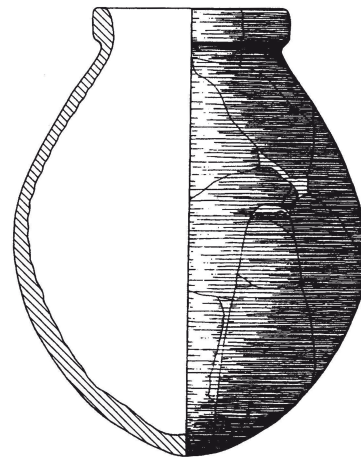
3564



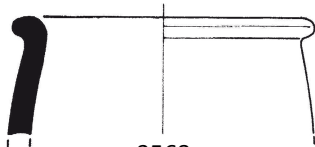
3565



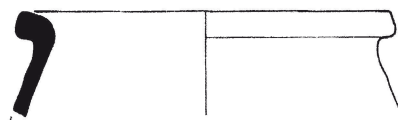
3566



3567



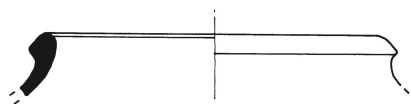
3568



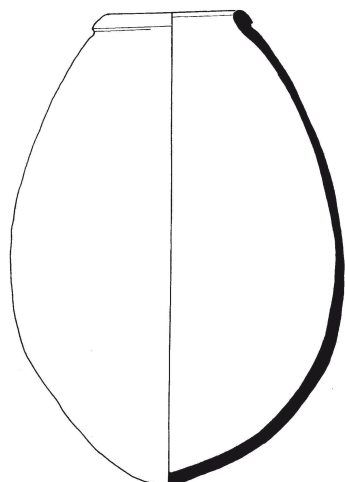
3569

3563, 3566, 3568-3569: Maßstab 1:3, 3564-3565, 3567: Maßstab 1:4.

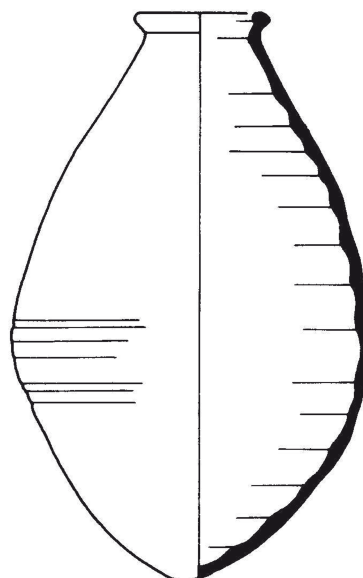
3563: Panitz-Cohen - Mazar 2009: 311 pl. 13.4, 3564: Penner 2006: 60 Abb. 24.1, Copyright Universität des Saarlandes, Fachrichtung Altertumskunde, Abt. Vor- und Frühgeschichte und Vorderasiatische Archäologie, 3565: Loud 1948: pl. 65.3, mit freundlicher Genehmigung Oriental Institute of the University of Chicago, 3566: Penner 2006: 119 Abb. 64.2, Copyright Universität des Saarlandes, Fachrichtung Altertumskunde, Abt. Vor- und Frühgeschichte und Vorderasiatische Archäologie, 3567: Penner 2006: 60 Abb. 24.2, Copyright Universität des Saarlandes, Fachrichtung Altertumskunde, Abt. Vor- und Frühgeschichte und Vorderasiatische Archäologie, 3568: Monchambert 2004: 186 fig. 75.1140, 3569: Monchambert 2004: 186 fig. 75.1145.



3570



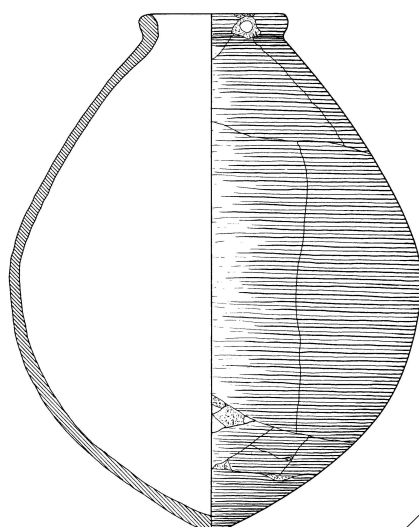
3571



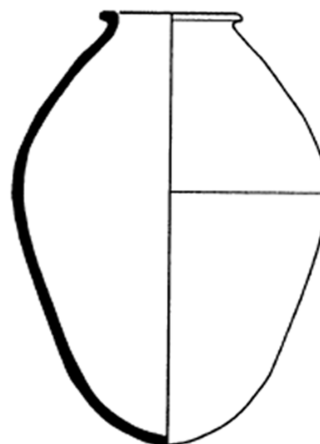
3572



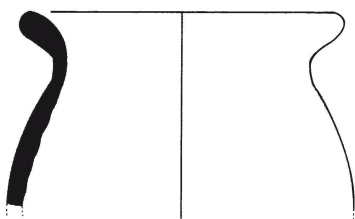
3573



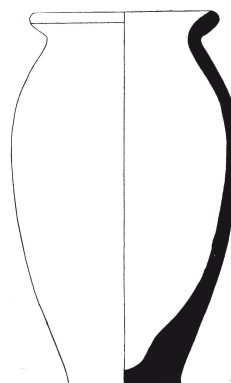
3574



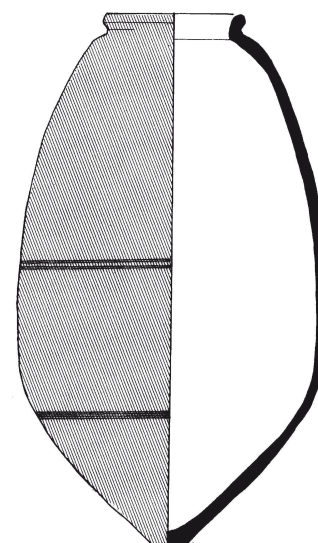
3575



3576



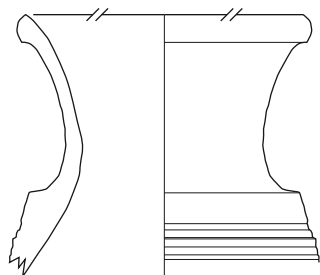
3577



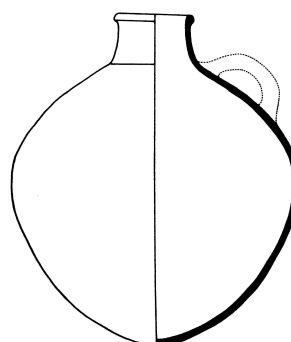
3578

3570, 3573, 3576-3578: Maßstab 1:3, 3571-3572, 3574-3575: Maßstab 1:6.

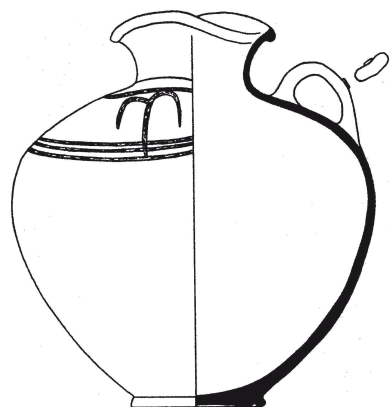
3570: Doumet-Serhal 1996: 230 pl. 48.9, 3571: Panitz-Cohen - Mazar 2009: 299 pl. 7.4, 3572: Negbi 1989: 53 fig. 5.7.14, 3573: Monchambert 2004: 186 fig. 75.1144, 3574: Metzger 1993: Taf. 117.6, 3575: Fischer et al. 2003: fig. 33.3, 3576: Monchambert 2004: 186 fig. 75.1141, 3577: Schaeffer 1949: 189 fig. 76.8, 3578: Panitz-Cohen - Mazar 2009: 299 pl. 7.3.



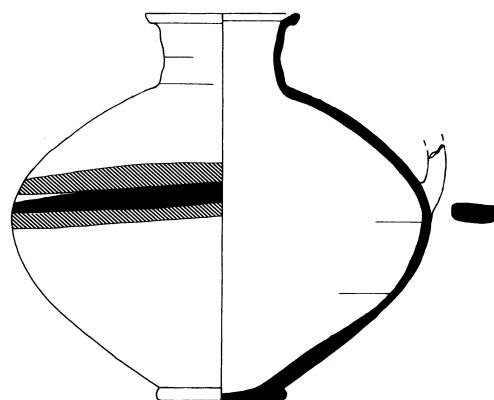
3579



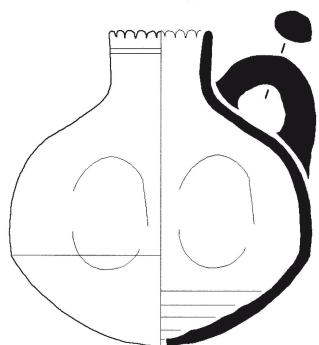
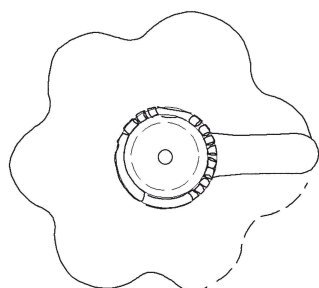
3580



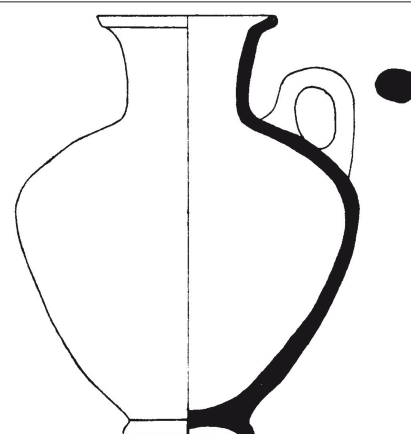
3581



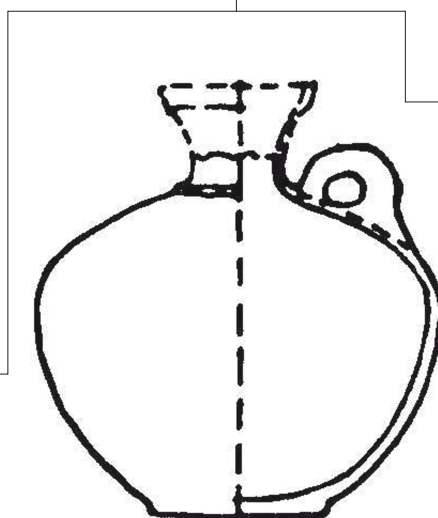
3582



3583



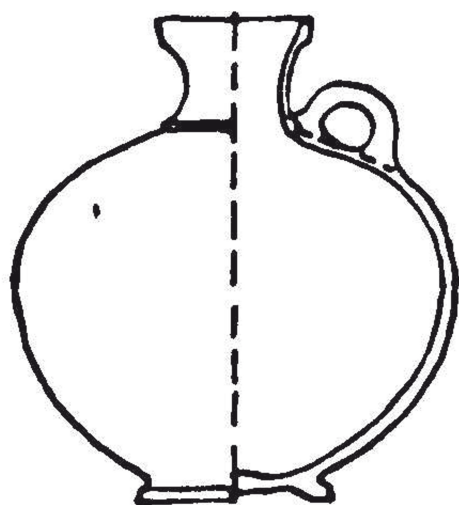
3584



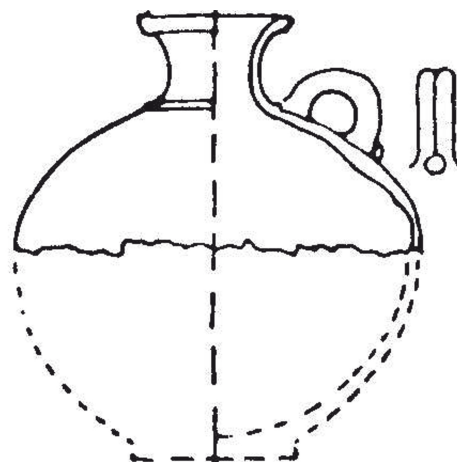
3585

3579, 3585: Maßstab 1:3, 3580: Maßstab 1:10, 3581-3582: Maßstab 1:6, 3583: Maßstab 1:4, 3584: Maßstab 1:5.

3579: MSH01G-q0170_35, Qatna-Projekt Universität Tübingen, 3580: Dornemann 1981: 37 fig. 7.7, 3581: Guy 1938: pl. 46.5, mit freundlicher Genehmigung Oriental Institute of the University of Chicago, 3582: Panitz-Cohen - Mazar 2006: 361 pl. 14.1, 3583: Badre - Gubel 1999-2000: 157 fig. 17f, 3584: Oren 1973: 198 fig. 32.4, mit freundlicher Genehmigung Penn Museum, 3585: Fugmann 1958, 120 fig. 143: O 9.



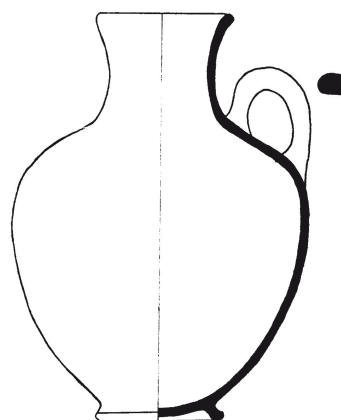
3586



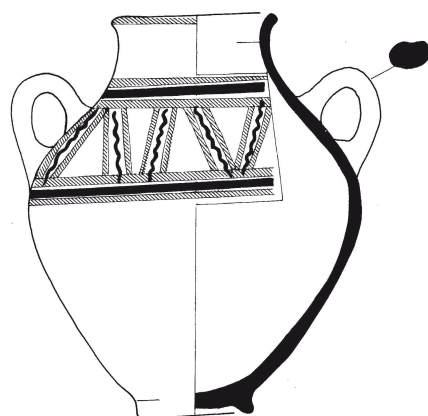
3587



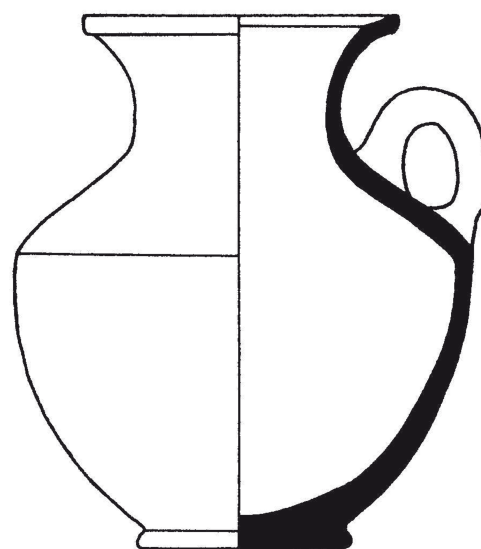
3588



3589



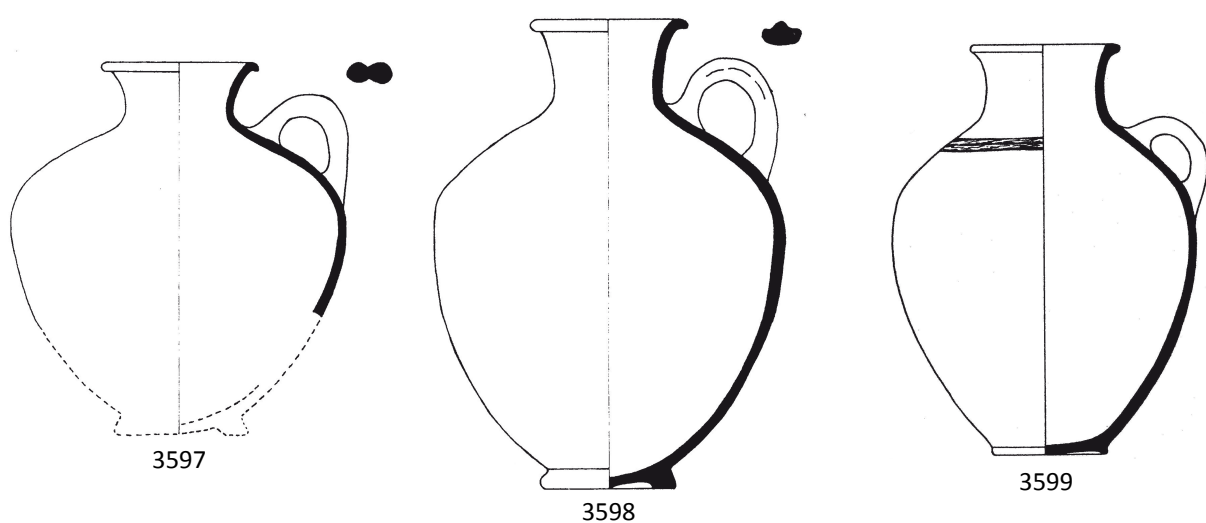
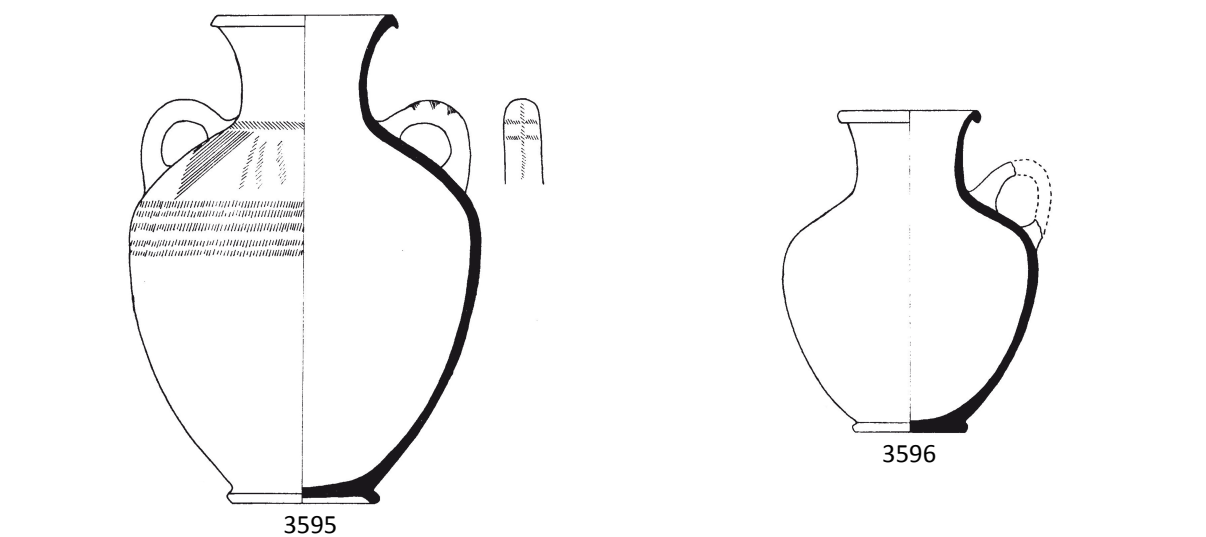
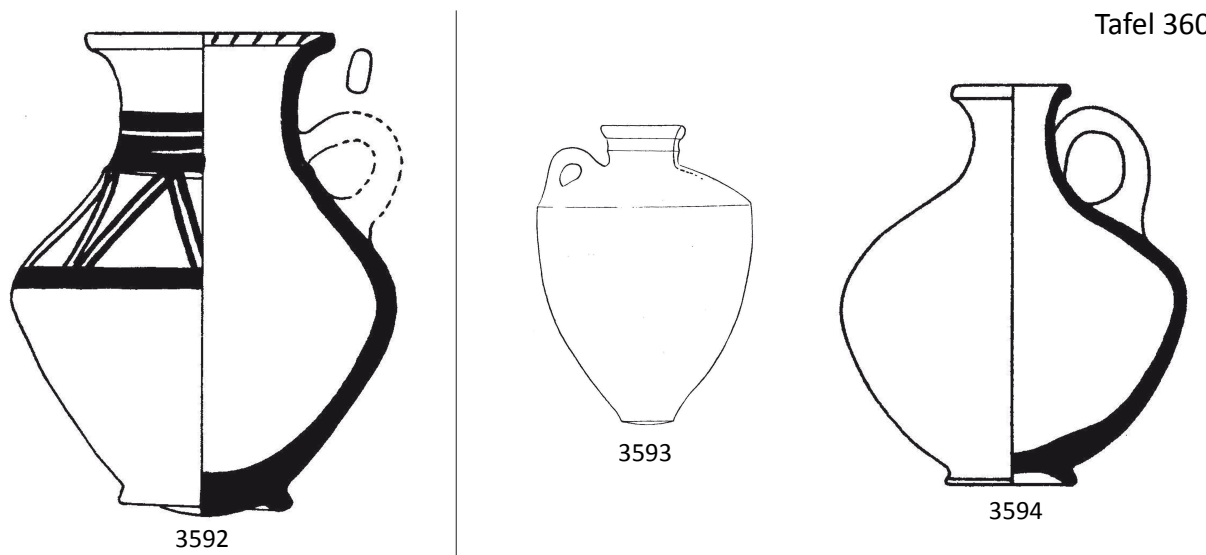
3590



3591

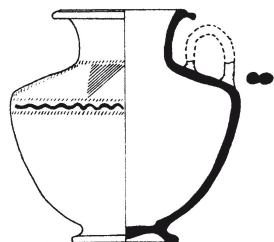
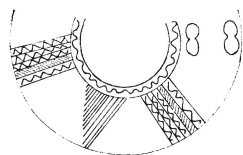
3586-3588, 3591: Maßstab 1:3, 3589-3590: Maßstab 1:6.

3586: Fugmann 1958, 120 fig. 143; O 497, 3587: Fugmann 1958: pl. X.6 B 594, 3588: Guy 1938: pl. 49.5, mit freundlicher Genehmigung Oriental Institute of the University of Chicago, 3589: Oren 1973: 196 fig. 31.2, mit freundlicher Genehmigung Penn Museum, 3590: Mazar - Mullins 2007: 505 pl. 58.5, 3591: Guy 1938: pl. 48.13, mit freundlicher Genehmigung Oriental Institute of the University of Chicago.

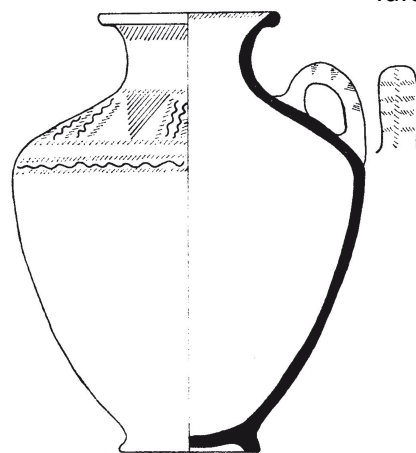


3592, 3594: Maßstab 1:3, 3593: Maßstab 1:10, 3595-3599: Maßstab 1:6.

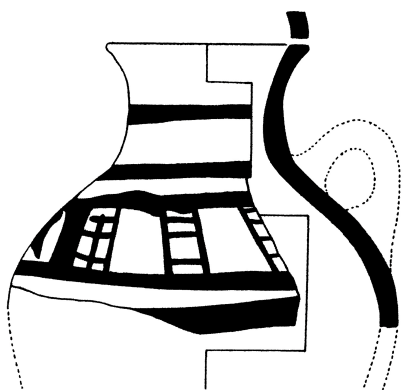
3592: Loud 1948: pl. 57.1, mit freundlicher Genehmigung Oriental Institute of the University of Chicago, 3593: Schaeffer 1938: 210 fig. 11Q, 3594: Guy 1938: pl. 30.10, mit freundlicher Genehmigung Oriental Institute of the University of Chicago, 3595: Oren 1973: 196 fig. 31.4, mit freundlicher Genehmigung Penn Museum, 3596: Oren 1973: 198 fig. 32.5, mit freundlicher Genehmigung Penn Museum, 3597: mit freundlicher Genehmigung Penn Museum, 3598: Oren 1973: 198 fig. 32.6, mit freundlicher Genehmigung Penn Museum, 3599: Guy 1938: pl. 46.8.



3600



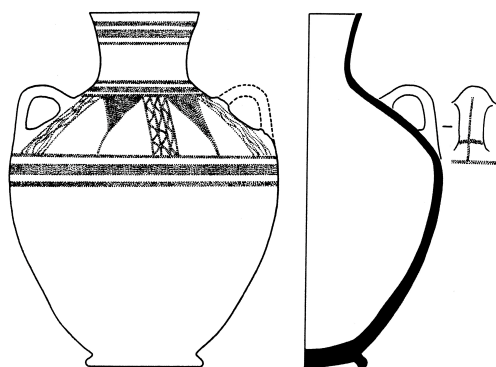
3601



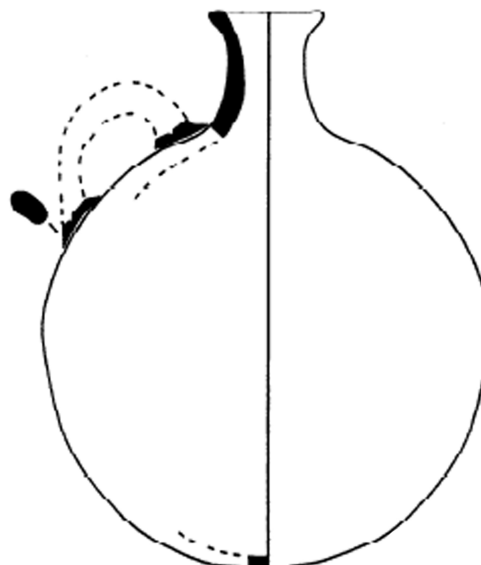
3602



3603



3604



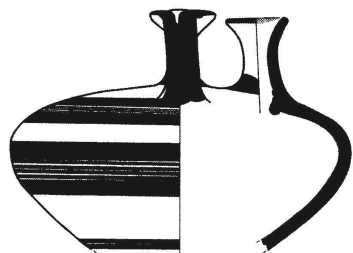
3605

3600, 3604: Maßstab 1:6, 3601: Maßstab 1:5, 3602-3603: Maßstab 1:4, 3605: Maßstab 1:3.

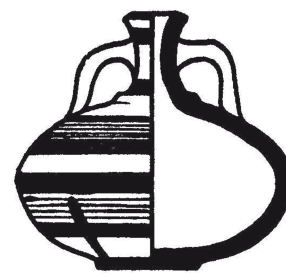
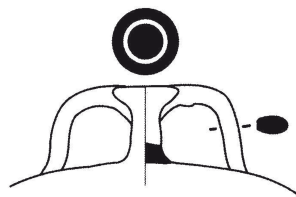
3600: Oren 1973: 198 fig. 32.8, mit freundlicher Genehmigung Penn Museum, 3601: Oren 1973: 198 fig. 32.2, mit freundlicher Genehmigung Penn Museum, 3602: Fischer 2006: 136 fig. 147.1, 3603: Guy 1938: pl. 46.16, mit freundlicher Genehmigung Oriental Institute of the University of Chicago, 3604: Fischer 2006: 119 fig. 124.1, 3605: Fischer et al. 2003: fig. 32.11.



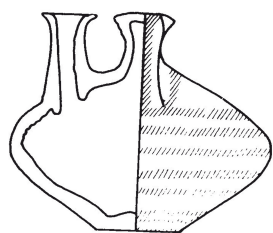
3606



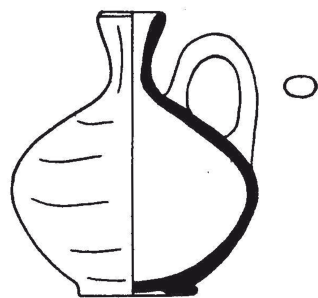
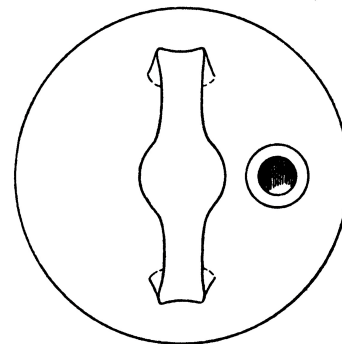
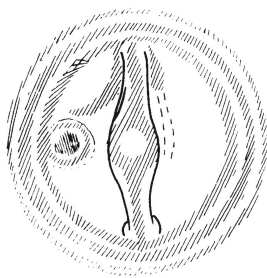
3607



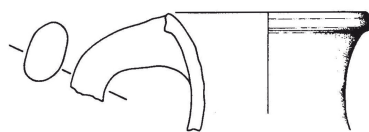
3608



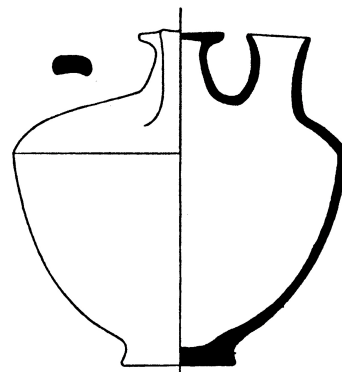
3609



3611



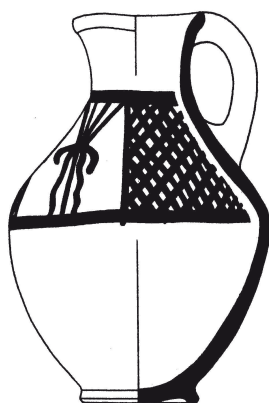
3612



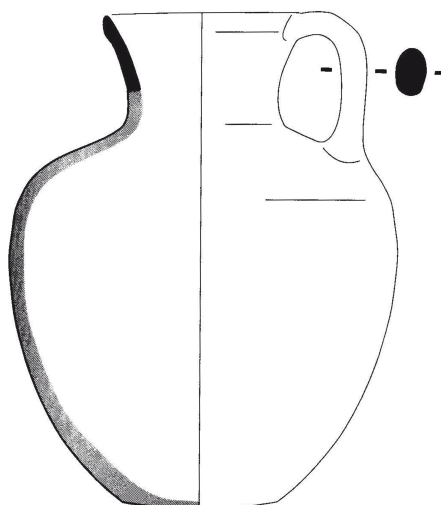
3610



3613



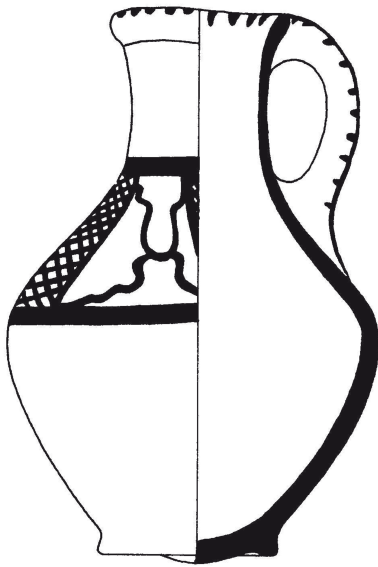
3614



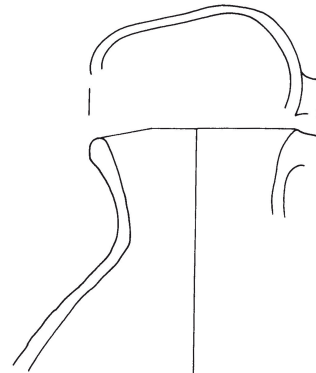
3615

3606-3609, 3611-3612, 3615: Maßstab 1:3, 3610: Maßstab 1:4, 3613-3614: Maßstab 1:6.

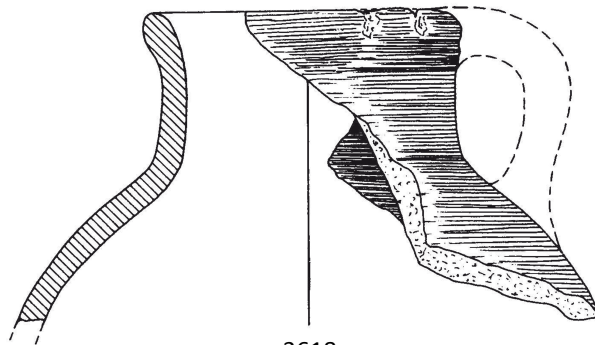
3606: Doumet-Serhal 2002: 204 pl. 8.4, 3607: Badre 2006: 90 fig. 18.1, 3608: Yadin et al. 1960: pl. CXXXVII.8, mit freundlicher Genehmigung Israel Exploration Society, 3609: Franken 1992: 40 fig. 4-3.18, 3610: Hamilton 1935: 39 fig. 240, 3611: Loud 1948: pl. 59.7, mit freundlicher Genehmigung Oriental Institute of the University of Chicago, 3612: Seeden 1986: 79 pl. 23.309, 3613: Guy 1938: pl. 14.2, mit freundlicher Genehmigung Oriental Institute of the University of Chicago, 3614: Guy 1938: pl. 19.21, mit freundlicher Genehmigung Oriental Institute of the University of Chicago, 3615: Thalmann 2006: pl. 109.1.



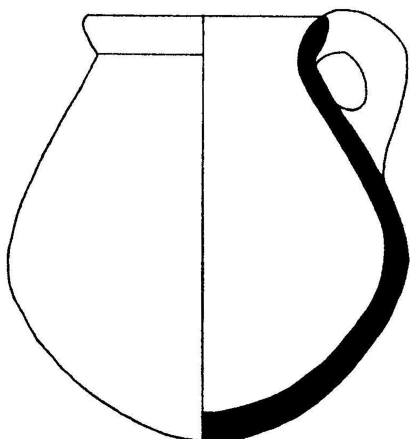
3616



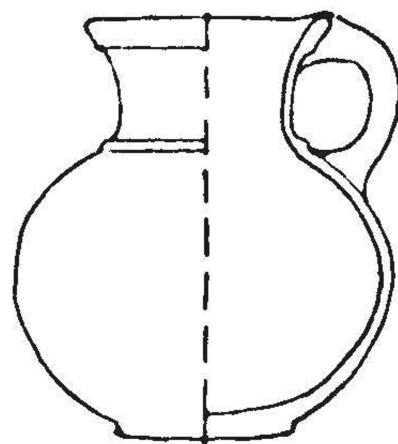
3617



3618



3619



3620

3616-3617: Maßstab 1:4, 3618-3620: Maßstab 1:3.

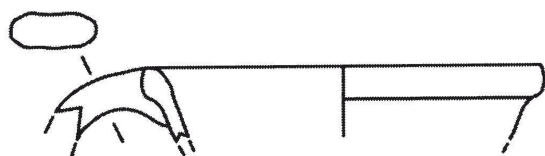
3616: Guy 1938: pl. 16.19, mit freundlicher Genehmigung Oriental Institute of the University of Chicago, 3617: Franken 1992: 143 fig. 7-19.228, 3618: Metzger 1993: Taf. 121.4, Copyright Universität des Saarlandes, Fachrichtung Altertumskunde, Abt. Vor- und Frühgeschichte und Vorderasiatische Archäologie, 3619: Guy 1938: pl. 57.6, mit freundlicher Genehmigung Oriental Institute of the University of Chicago, 3620: Fugmann 1958: pl. X.6 A 305.



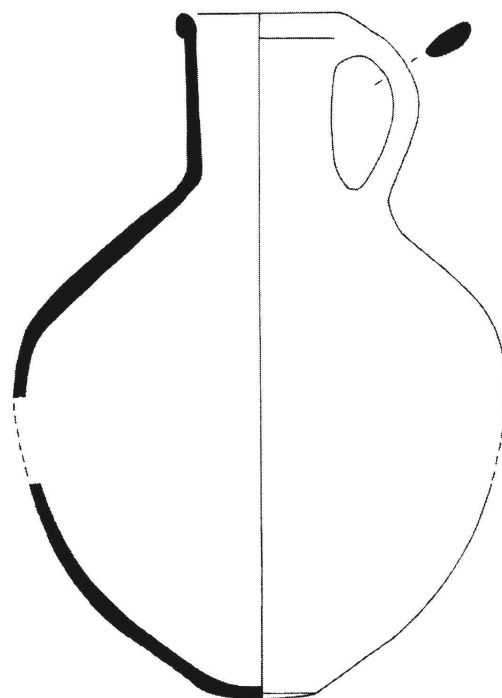
3621



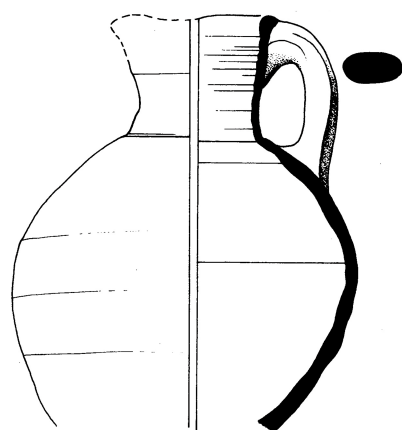
3622



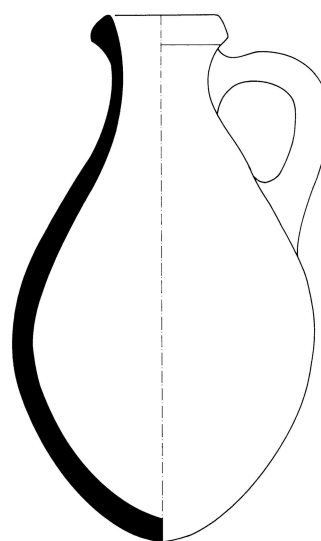
3623



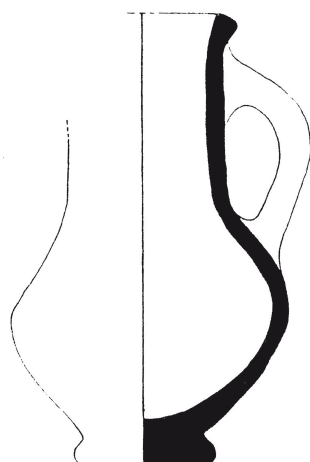
3624



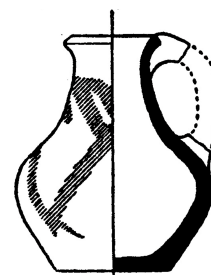
3625



3626

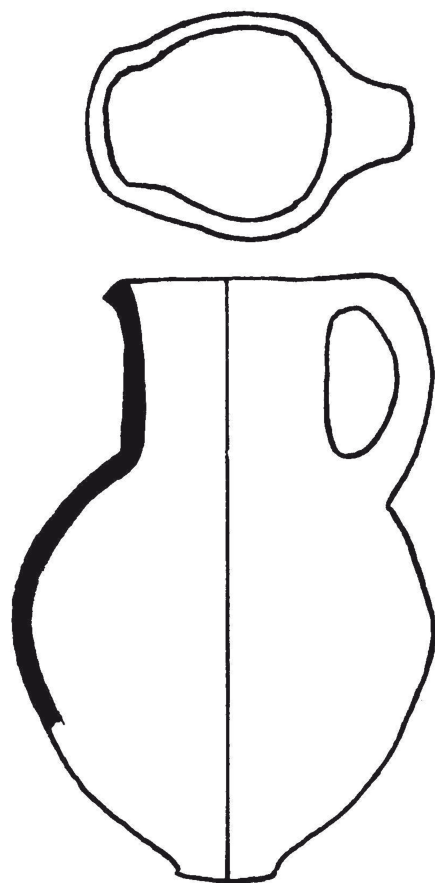


3627

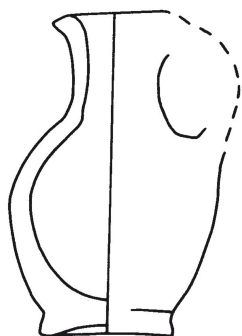


3628

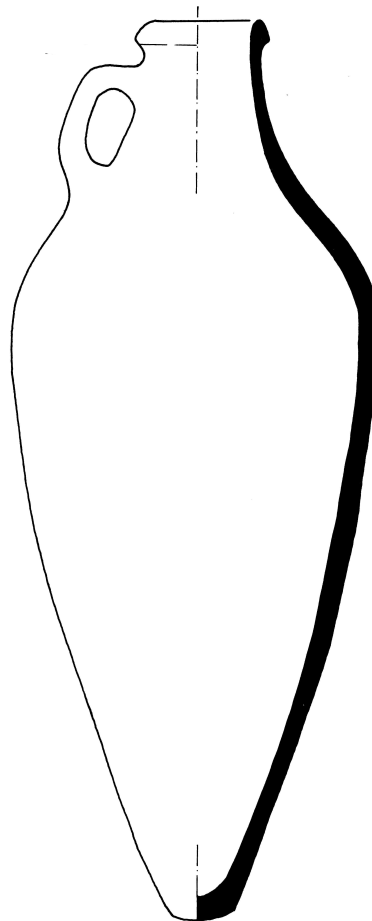
3621-3623, 3626-3628: Maßstab 1:3, 3624-3625: Maßstab 1:5.



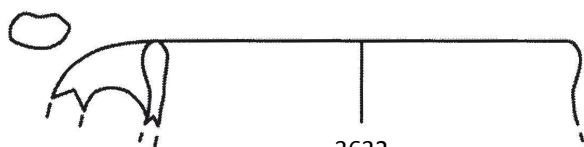
3629



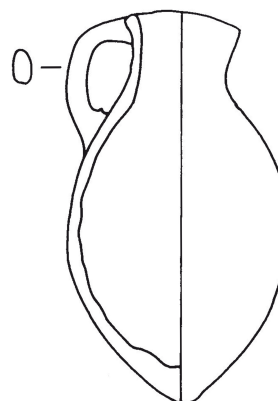
3630



3631



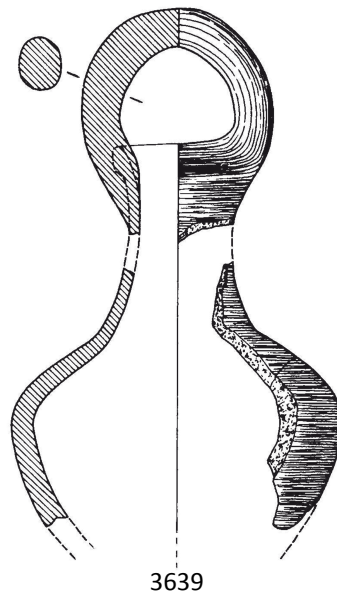
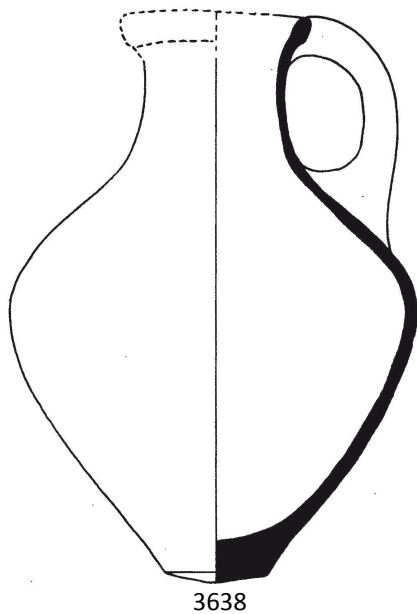
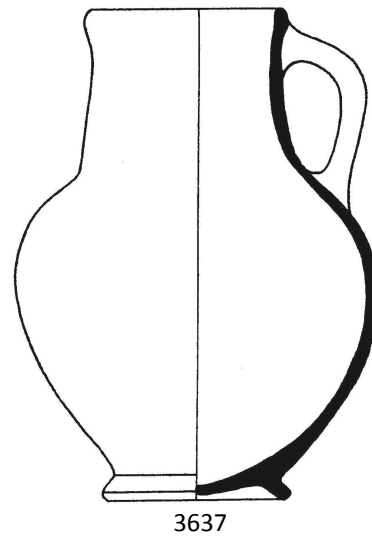
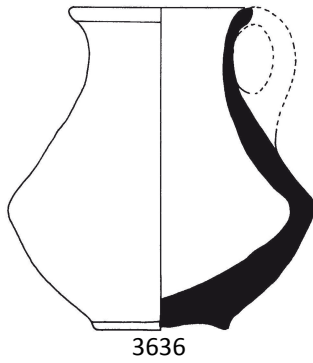
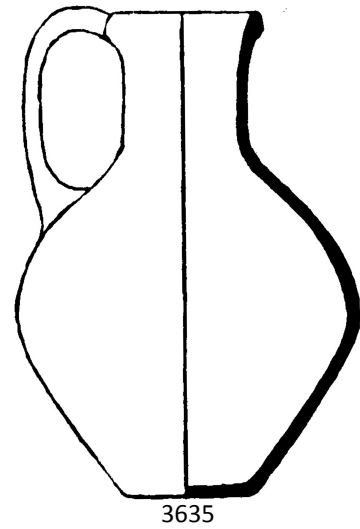
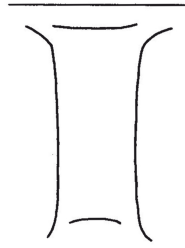
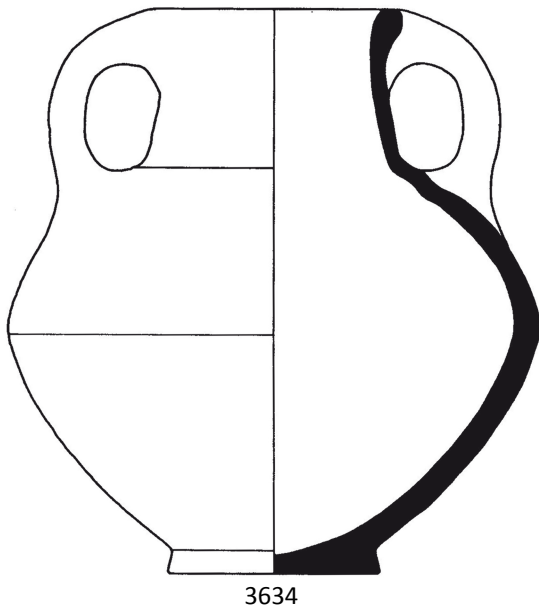
3632



3633

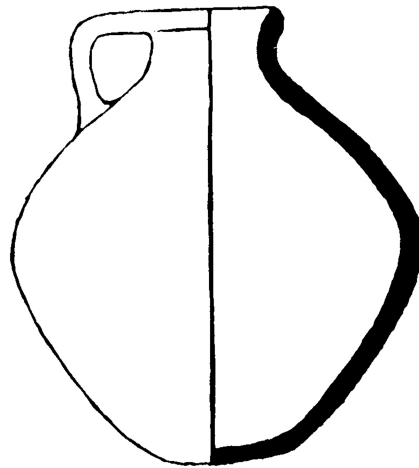
3629: Maßstab unbekannt, 3630, 3632-3633: Maßstab 1:3, 3631: Maßstab 1:8.

3629: Tufnell 1958: pl. 76.707, 3630: Franken 1992: 55 fig. 4-15.25, 3631: Caubet 1982: 31, 3632: Iamoni 2012: pl. 40.11, 3633: Franken 1992: 44 fig. 4-6.7.

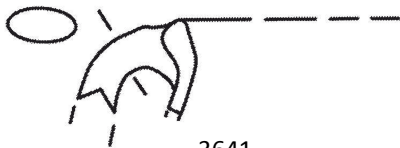


3634-3636, 3639: Maßstab 1:3, 3637-3638 Maßstab 1:4.

3634: Pritchard 1963: 85 fig. 8.29, mit freundlicher Genehmigung Penn Museum, 3635: Woolley 1955: pl. CXIV.62b, 3636: Badre et al. 1994: 319 fig. 45h, 3637: Guy 1938: pl. 14.23, mit freundlicher Genehmigung Oriental Institute of the University of Chicago, 3638: Loud 1948: pl. 59.4, mit freundlicher Genehmigung Oriental Institute of the University of Chicago, 3639: Metzger 1993: Taf. 122.2, Copyright Universität des Saarlandes, Fachrichtung Altertumskunde, Abt. Vor- und Frühgeschichte und Vorderasiatische Archäologie.



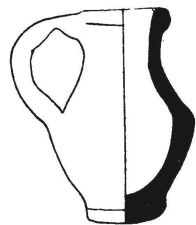
3640



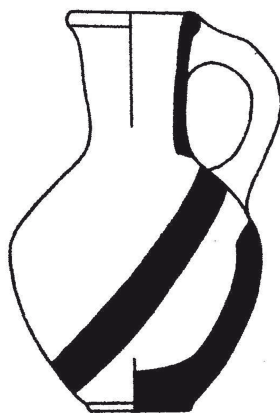
3641



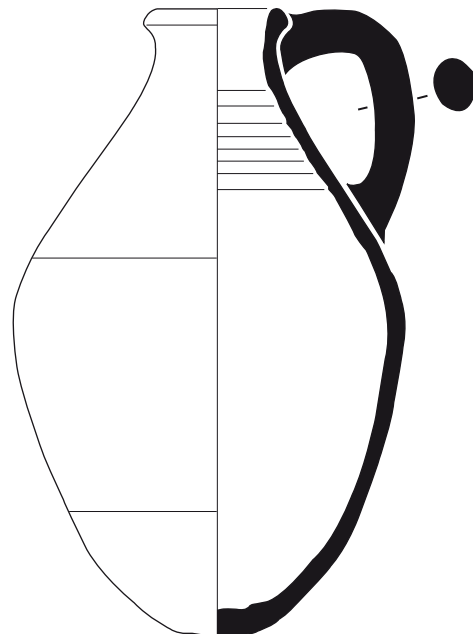
3642



3643

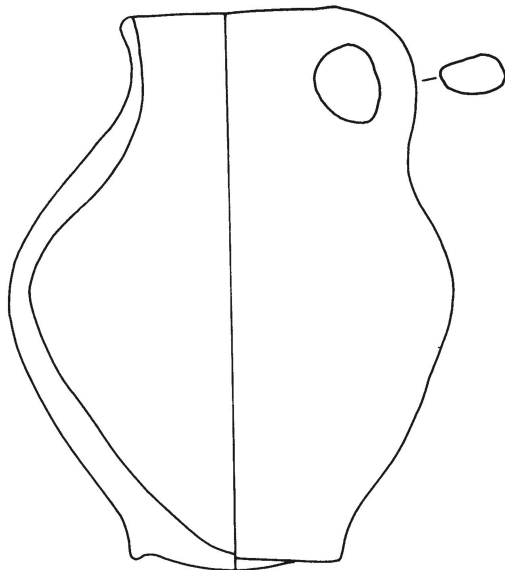


3645

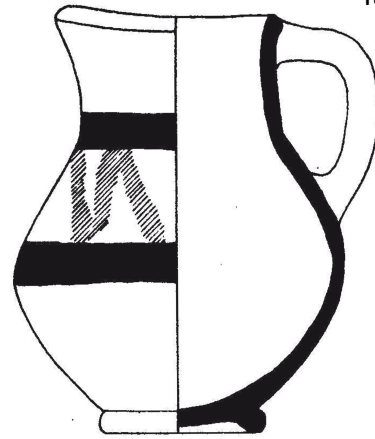


3644

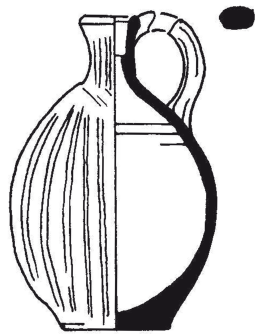
Maßstab 1:3.



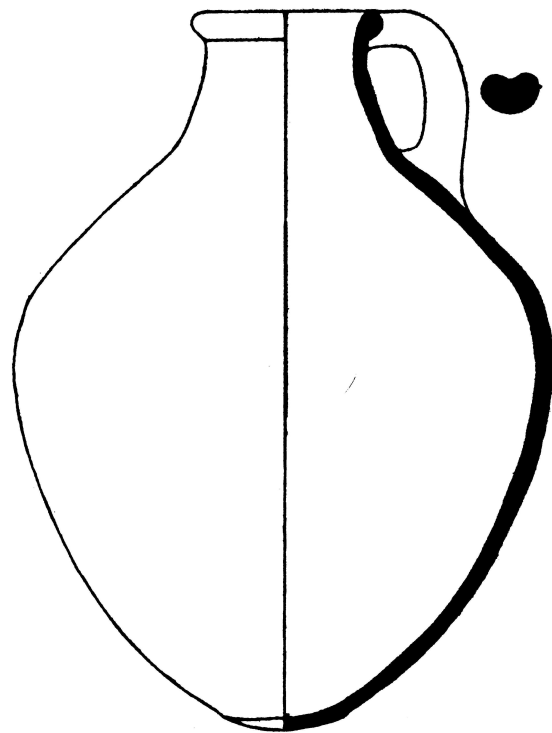
3646



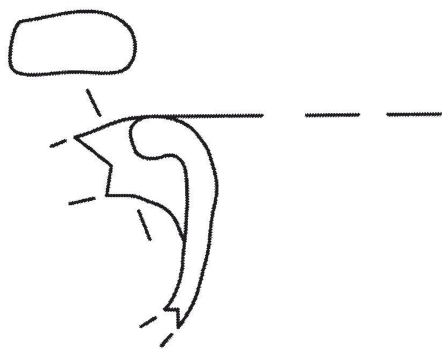
3647



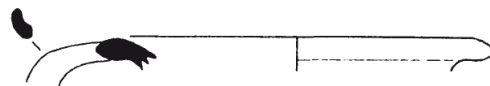
3648



3649

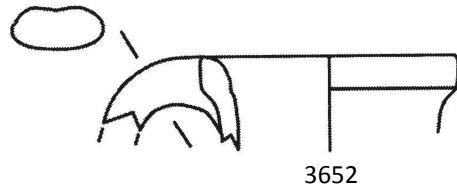


3650

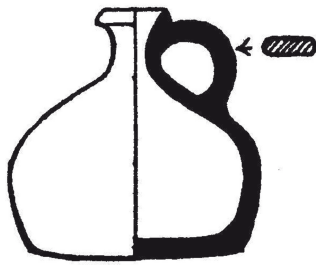


3651

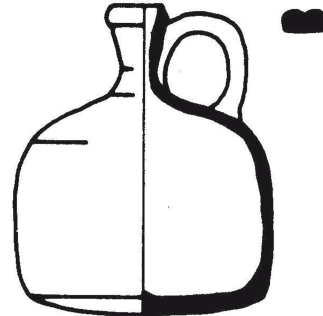
3646-3648, 3650: Maßstab 1:3, 3649: Maßstab 1:4, 3651: Maßstab unbekannt.



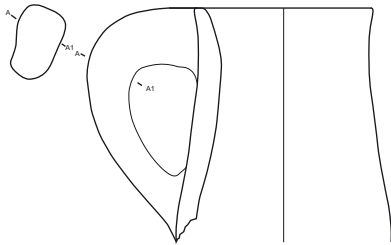
3652



3653



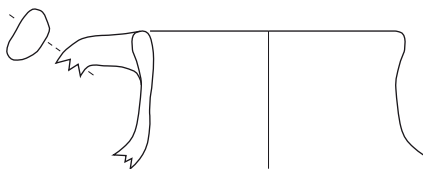
3654



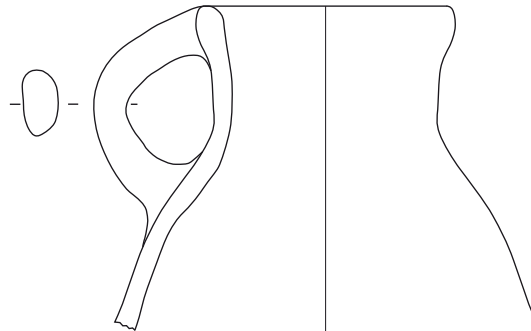
3655



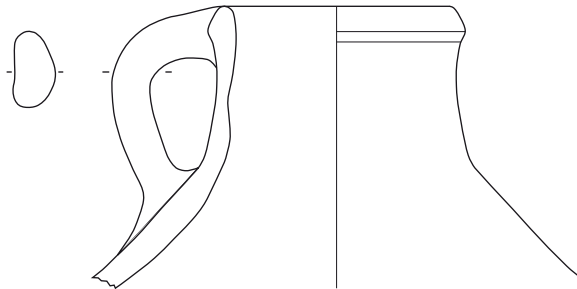
3656



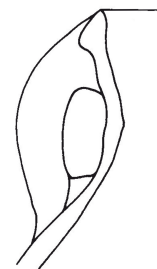
3657



3658



3659



3660

Maßstab 1:3.